



WORLD'S LEADING AIR CONDITIONING
COMPANY FROM JAPAN

Residential AC Catalogue

Innovation that cools you
and the planet.



**PATENTED STREAMER
DISCHARGE TECHNOLOGY**



**PATENTED SWING
COMPRESSOR**



**IoT
TECHNOLOGY**



**ECO-FRIENDLY
GREEN REFRIGERANT**

C O N T E



CONTENTS

- 01** What Daikin stands for
- 03** Our timeline
- 04** Awards and recognition
- 05** Transcending boundaries with innovation
- 07** Innovating for the next
- 09** Innovating to raise the standards and quality
- 10** Pushing the boundaries with innovation
- 11** Patented Streamer Discharge technology
- 12** R-32 befriending the environment
- 13** Taking control of the future with inverter technology
- 15** Innovating to lead
- 28** Innovative products that delight
- 47** Technical specifications
- 56** Unit options
- 57** Features list
- 60** Voice of customer
- 61** All reasons to bring Daikin home

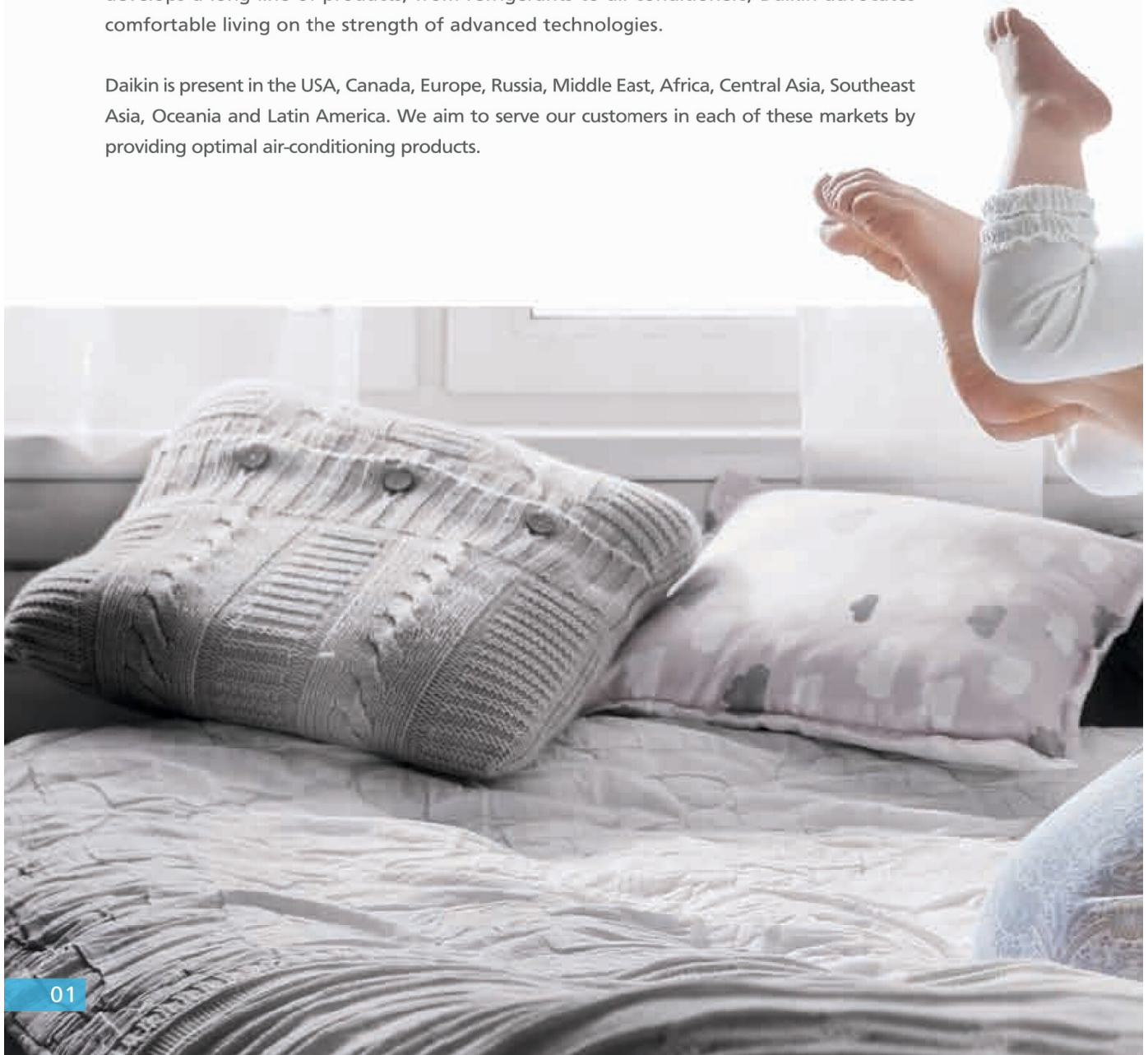


What Daikin stands for

Daikin is a leading innovator and provider of advanced, high-quality air-conditioning solutions for residential, commercial and industrial applications. As World's Leading Air-conditioning Company, Daikin is committed to delivering air-conditioning solutions that enhance the quality of life all around the world.

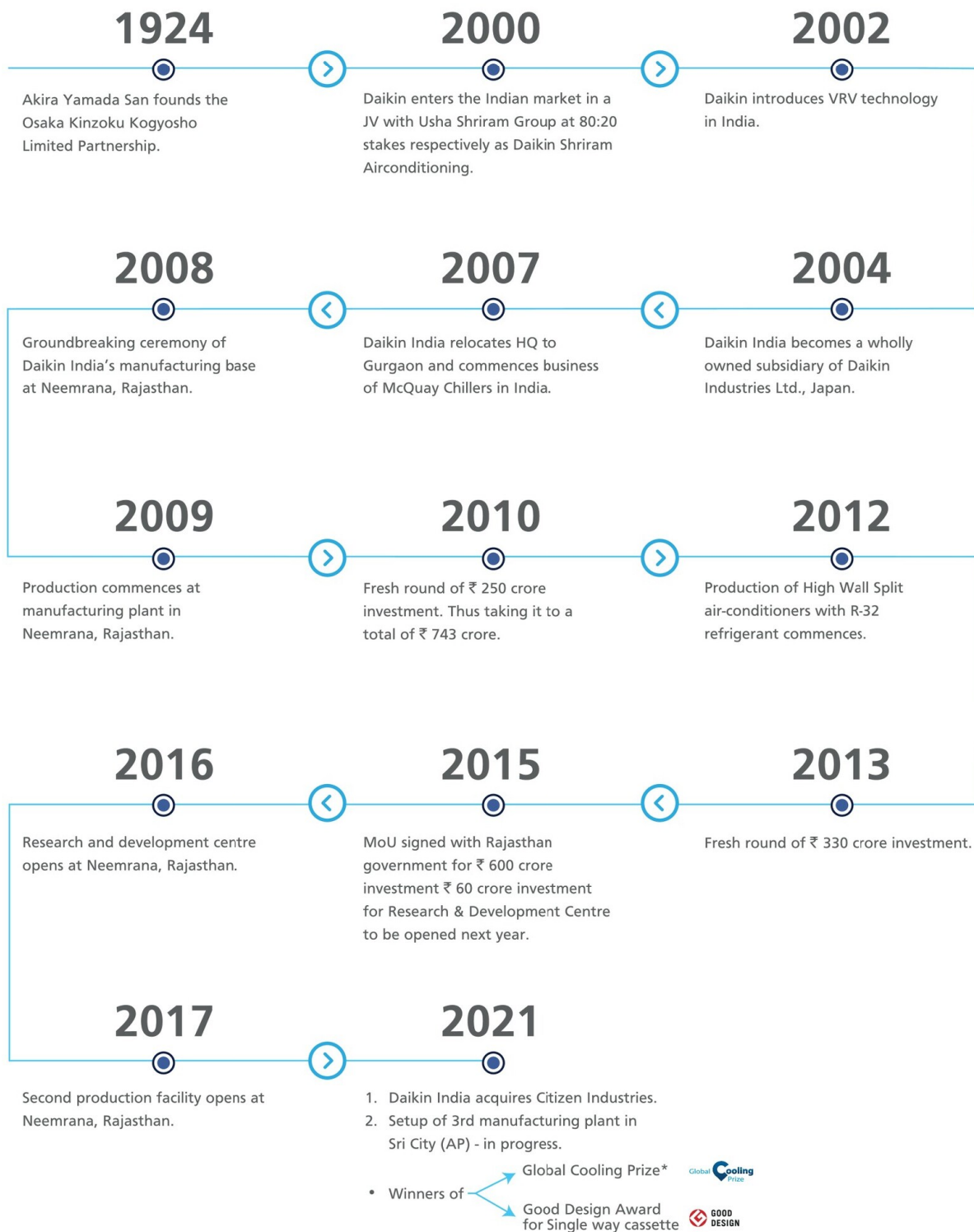
A diverse multinational company, Daikin Industries Ltd., active in air-conditioning, chemicals and oil hydraulics, was established in 1924. With headquarters at Osaka, Japan, the Daikin family has more than 84,870 members, working across 100+ production base units and 316 consolidated subsidiaries worldwide. As the world's sole manufacturer that develops a long line of products, from refrigerants to air-conditioners, Daikin advocates comfortable living on the strength of advanced technologies.

Daikin is present in the USA, Canada, Europe, Russia, Middle East, Africa, Central Asia, Southeast Asia, Oceania and Latin America. We aim to serve our customers in each of these markets by providing optimal air-conditioning products.





Our timeline



*Lead Organisation.

We innovate because we care



**WE ARE PROUD TO ANNOUNCE
THAT WE ARE THE WINNER OF THE
GLOBAL COOLING PRIZE (GCP)
TOGETHER WITH NIKKEN SEKKEI LTD.**

The Global Cooling Prize is rallying a global coalition of leaders to solve the critical climate threat that comes from growing demand for residential air conditioning. It encourages harnessing the power of innovation to provide cooling solutions that enhance people's lives without contributing to runaway climate change.

We collaborated with Nikken Sekkei Ltd. to propose a new concept for room air conditioning. The innovation employs a technology that can achieve comfort and energy savings, concurrently ensuring a consistent room temperature and humidity by adequately controlling multiple indoor units in one room. Moreover, it utilises the vapourisation heat of water to further increase the energy efficiency of the equipment. The proposed equipment uses HFO-1234ze(E) refrigerant, which has a low Global Warming Potential (GWP).

KEY ATTRIBUTES OF THE SOLUTION



The Global Cooling Prize that we have won is consistent with our 'Environmental Vision 2050', which provides a roadmap for us to reach carbon neutrality by 2050. In line with that vision, we are in a continuous search to reduce energy consumption and refrigerant impact. We continuously strive to examine energy efficiency technology with low GWP refrigerant alternatives to make the planet better and greener.

Transcending Boundaries with Innovation



DAIKIN IS PRESENT IN OVER 160 COUNTRIES

EUROPE AFRICA & MIDDLE EAST
12,128
Employees
91
Subsidiaries

JAPAN
13,318
Employees
31
Subsidiaries

AMERICAS
22,697
Employees
107
Subsidiaries

- Osaka Head Office ●
- Tokyo Office ●
- Production Site ●
- Overseas Affiliate ●
- R&D Site ●

Note: Map not to scale



CHINA
19,360
 Employees
33
 Subsidiaries

ASIA AND OCEANIA
17,367
 Employees
54
 Subsidiaries

DAIKIN GROUP
84,870
 Employees
316
 Subsidiaries

Innovating for the Next

Engine of growth

MANUFACTURING PLANT

Daikin's manufacturing plant at Neemrana, Rajasthan, aims to create products that will add comfort to the lives of people. It is supported by a network of production bases throughout the world and showcases the application of advanced technology and equipment. Our comprehensive quality control system features centrally computerised management of quality and production data to facilitate high-quality production within scheduled time.

Area* **4,65,537** sq mtrs

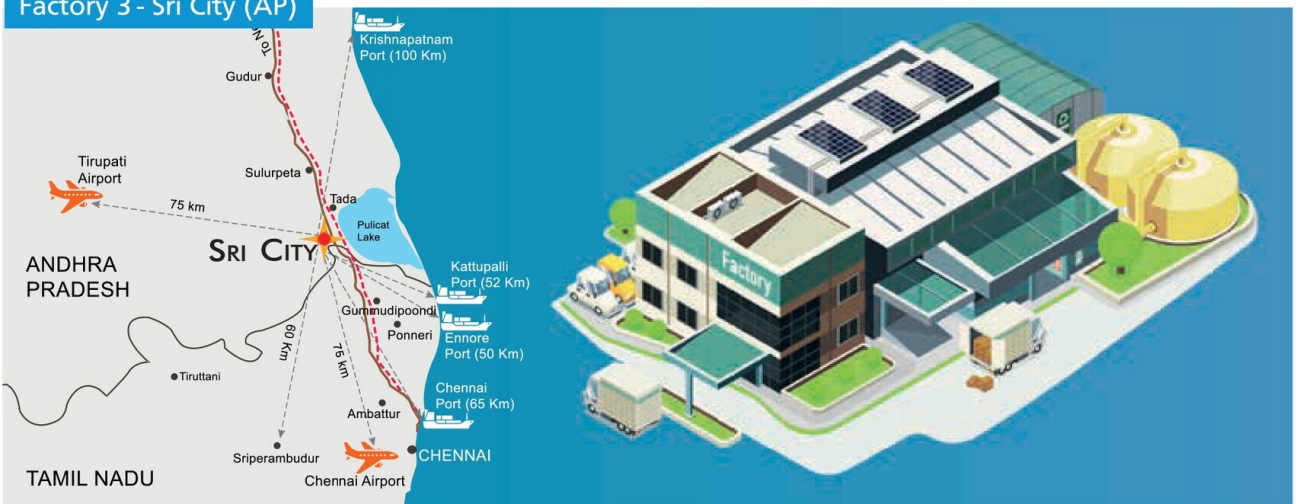
Factory 1 - Neemrana, Rajasthan



Factory 2 - Neemrana, Rajasthan



Factory 3 - Sri City (AP)



ACDC Centre



07 *Area includes Factory 1, Factory 2, Factory 3, ACDC Centre and Research & Development Centre

Disclaimer - Due to continuous expansion, numbers may differ. Visuals used are for representation purpose only.



Area 30,523 sqm

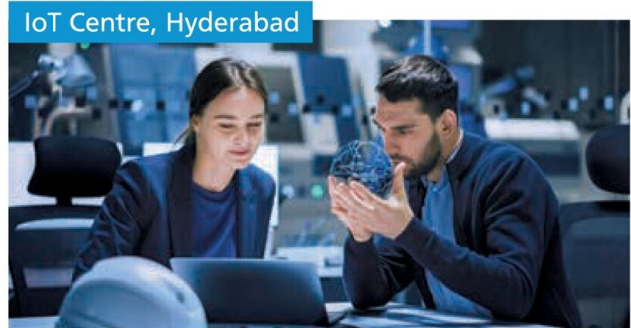
RESEARCH & DEVELOPMENT FACILITY

27+ Lab facilities

- Psychometric lab
- Multi-chamber lab
- Full Anechoic chamber for running sound test
- Product Reliability test lab, CFM test lab and Psychometric lab

9 Test facilities

- Cyclic Corrosion test
- Salt Spray test
- Thermal Shock test
- Vibration test
- Environmental test
- Drop test



- Concept room
- Mock-up area
- Device test room (electronic parts test room)

Disclaimer - Due to continuous expansion, Numbers may differ. Visuals used are for representation purpose only



Innovating to raise the standards and quality

The Department of Industrial Policy and Promotion (DIPP), Ministry of Commerce and Industry has mandated the Quality Control Order (QCO) for the AC & its related parts as per IS 1391 (Part 2): 2018.

BENEFITS FOR CUSTOMER

The main aim of the QCO is to ensure best quality critical components, which is tested and approved by BIS and follow Indian Standards (IS) for local as well as imported parts related to air conditioners products which are under scope of Quality Control Order.

*Not available for FTHT Series

DAIKIN PRODUCTS ARE OF WORLD CLASS QUALITY THAT YOU CAN SEE, FEEL AND EXPERIENCE

Our *all Residential Air Conditioners are "BIS" Certified Under License No. 8400163007.



Pushing the Boundaries with Innovation

Daikin innovates relentlessly not just to adapt but also to introduce groundbreaking technologies to the world. It is incessantly on the path to outdo itself to improve the lives of the people and the planet. Be it the Patented Streamer Discharge Technology or the super efficient Inverter Technology, Daikin remains in the forefront to bring a change for good.

While its mission is to contribute to the society by providing the most advanced ACs, it also strives to gain the trust of the people by delivering unmatched customer

satisfaction. Daikin aims to continually add value to foster the trust of the people and the channel partners through research, innovation and continuous development.



Patented Streamer Discharge Technology

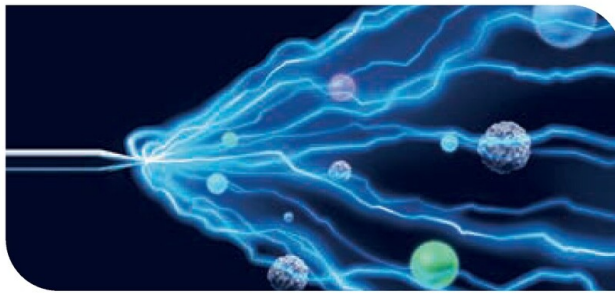


GET YOUR AIR 'IMMUNIZED'

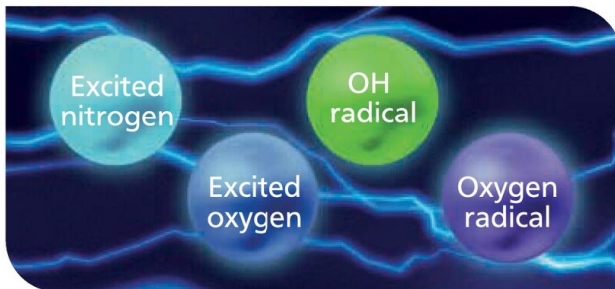
Daikin's Streamer Discharge inactivates 99.9% of the novel coronavirus (sars-cov-2)*

"Streamer Discharge" is a type of plasma discharge which generates high speed electrons that combine with oxygen and nitrogen in the air and turn into active species with strong oxidative decomposition power and thereby eliminate allergens such as mould, mites (droppings and dead mites), pollen and hazardous chemical substances such as formaldehyde. Compared to standard plasma discharge (glow discharge), its speed of oxidative decomposition is over 1000 times greater with the same electrical power. The decomposition power is comparable to thermal energy of about 100,000°C.#

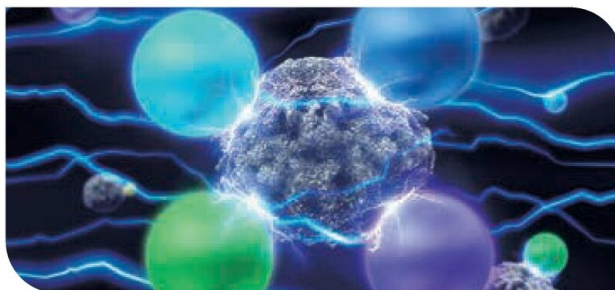
MECHANISM OF DECOMPOSITION BY STREAMER



Streamer emits high-speed electrons.



The electrons collide and combine with nitrogen and oxygen in the air to form four kinds of decomposing elements with decomposition power.



The decomposing elements provide decomposition power.

- Testing organization: Okayama University of Science
- Test subject: Novel coronavirus (CoV-2)
- Test result: 99.9% or more inactivation in 3 hours
- Test Method: Irradiating the streamer inside an acrylic box of about 31L
- Report date: 8th July 2020

Note:

*a. This result was obtained by using a Streamer discharge device for testing in lab conditions. The effects of products equipped with Streamer technology or results in actual use environments may differ.

*b. It does not prove the effect against all viruses and bacteria.

#Comparison of oxidation decomposition. This does not mean temperature will become high.

For more information visit: <https://www.daikinindia.com/streamer-technology-to-inactivate-coronaviruses>

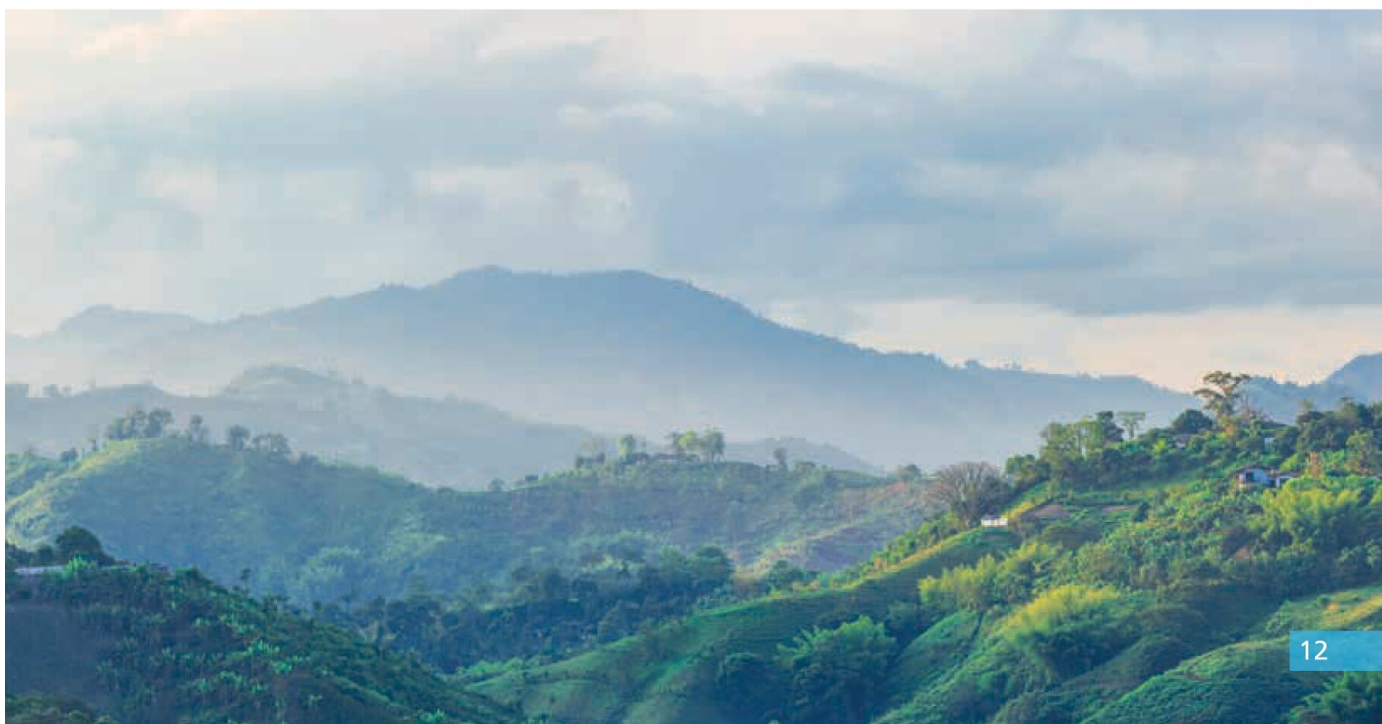
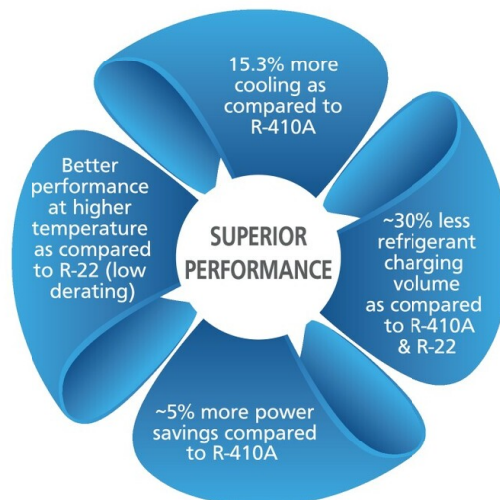
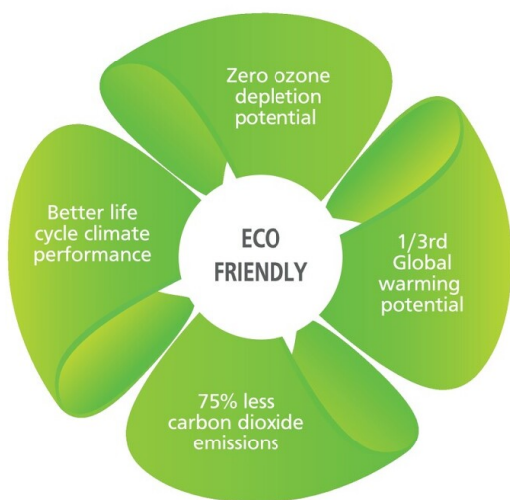
Befriending the Environment



Air is something that surrounds us 24 hours a day. In fact, our existence, as well as earth's depends on it. At Daikin, the future of the world's air is our greatest concern. We, the manufacturer of world's best air-conditioners, are always paving the path to save our environment for next generation. We phased out all R-22 model and shifted to the

green refrigerant R-32. Now, whole world is coming together to find and work on way to address global warming issue. We are also offering worldwide free access to patents for equipment using next generation refrigerant, R-32. Refrigerant choice is a key in saving the ozone layer and reducing global warming.

Our all Residential Air Conditioners models manufactured in India use the next-generation refrigerant, R-32.



Taking control of the future with Inverter Technology



WHAT IS INVERTER TECHNOLOGY AND HOW IS IT DIFFERENT FROM NON-INVERTER TECHNOLOGY?

An inverter is a device for converting frequency. The technology is used in many home appliances and controls electric voltage, current and frequency. Inverter air-conditioners vary their cooling/heating capacity by adjusting the power supply frequency of their compressors.

WHAT ARE THE BENEFITS OF INVERTER AIR-CONDITIONERS?



Powerful

Inverter air-conditioners operate at maximum capacity as soon as they start up. As a result, the set temperature can be reached more quickly.



Energy saving

After the indoor temperature approaches the set temperature, inverter control adjusts to low capacity operation to maintain this temperature. This makes inverter models more energy saving than non-inverter models, which must repeatedly start or stop their compressors to maintain the room temperature.



Comfortable

Inverter air-conditioners finely adjust capacity according to changes in the air-conditioning load and the difference between the indoor temperature and set temperature is small. This gives higher comfort level than the non-inverter air-conditioners.



WHAT MAKES DAIKIN'S INVERTER TECHNOLOGY UNIQUE?



Swing compressor

Daikin Air conditioners come with a Patented Swing Compressor which decreases friction and vibration. This helps in a smooth rotation of the swing compressor which provides a quiet and efficient operation. It saves electricity because of low pressure return during compression. The Swing Compressor also prevents leakage of refrigerant gas during compression. Quiet and efficient operation of the Swing Compressor due to low friction and vibration is better than conventional rotary compressor.



Daikin was presented 32nd Chairman's Award by the Japan society for the promotion of the machine industry for swing compressor.

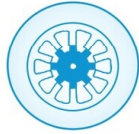


DC inverter

Daikin calls an inverter model that is equipped with a DC motor as DC inverter. A DC motor offers higher efficiency than an AC motor. A DC motor uses the power of magnets to attract and repel to generate rotation. A DC motor that is equipped with powerful neodymium magnets, which enable even greater efficiency, is called a reluctance DC motor.



Recipient of Electric Science Promotion Award (Reluctance DC motor for compressor)

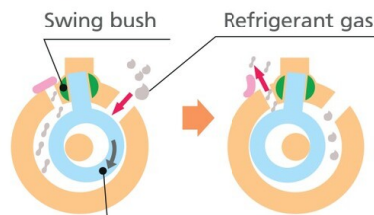


Reluctance DC motor for compressor

Daikin DC inverter models are equipped with the reluctance DC motor for compressor. The reluctance DC motor uses two different types of torque, neodymium magnet and reluctance torque. This motor saves energy by generating more power with a smaller electric current than AC or conventional DC motors. Daikin's internally embedded neodymium magnet generates strong magnetic field and high torque resulting in high operational efficiency with less electricity consumption. It is more efficient at low frequencies most commonly used by air-conditioners improving efficiency by approximately 20%.



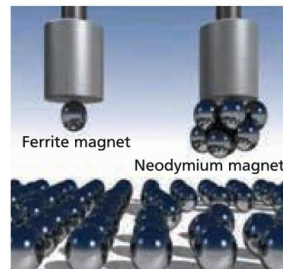
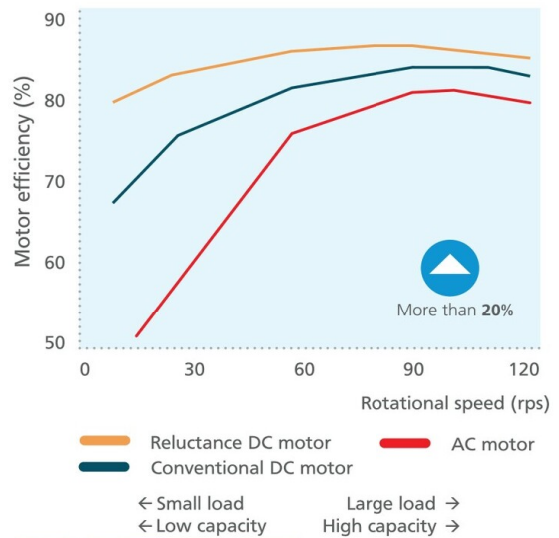
Neodymium magnets are used in the pink-coloured area.



Integral piston of blade and roller

The swing compressor can reduce operational vibration and sound because its piston moves smoothly inside the compressor.

Efficiency of Reluctance DC motor

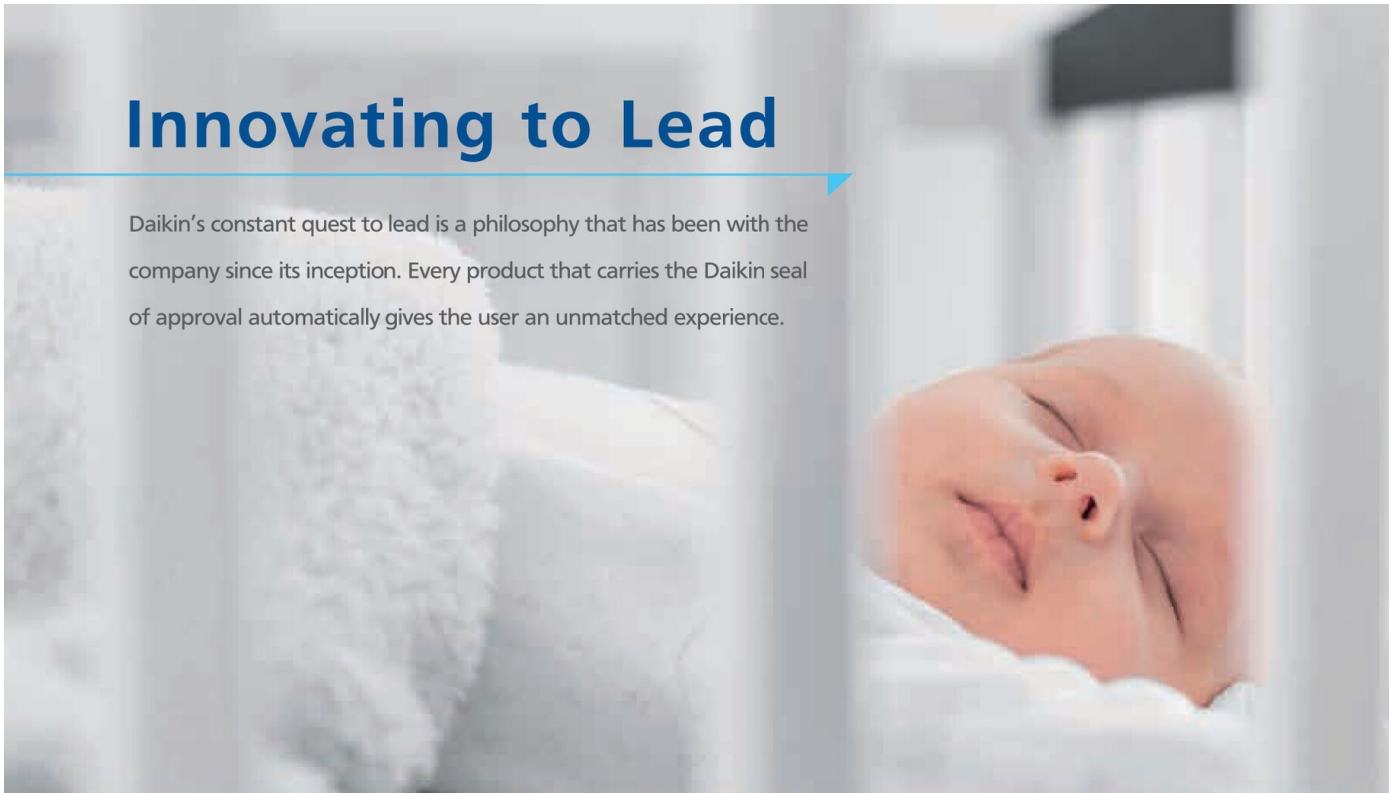


NEODYMIUM MAGNET
10 times
stronger than standard ferrite magnet

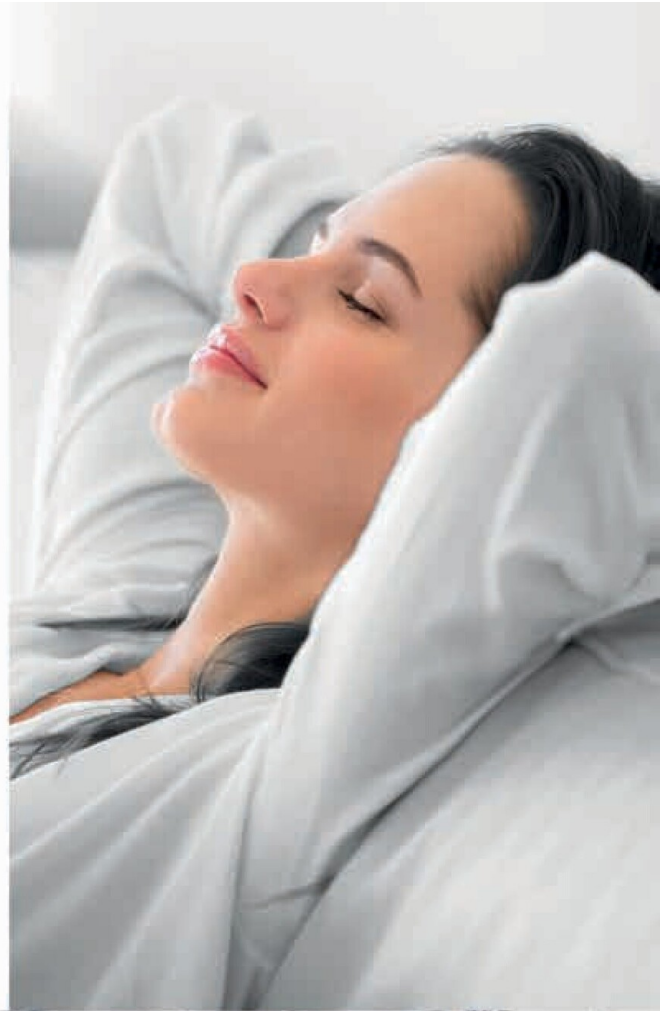
Neodymium magnets are approximately 10 times stronger than standard magnets. The use of neodymium magnets in Daikin compressors enhances their performance. Besides, it helps to improve the frequency range used by air-conditioners during periods of stable operation in which air-conditioners operate for the longest periods.

Innovating to Lead

Daikin's constant quest to lead is a philosophy that has been with the company since its inception. Every product that carries the Daikin seal of approval automatically gives the user an unmatched experience.



- Highest ISEER
- Patented Streamer Discharge Technology
- Getting Smarter with IoT
- Intelligent Eye
- High Ambient Operation: 56°C
- Dew Clean Technology
- Triple Display
- Anti-Corrosion Treatment
- Powerful Air Throw



INNOVATING TO LEAD

Highest ISEER

**ISEER
6.2
RATING**

ROLE

Daikin's Integrated Power Module Printed Circuit Board and Patented Swing Compressor Technology are a unique engineering design where the PCB (Controllers) is designed in such a way that it optimizes the cooling effect & also result in higher efficiency. Based on this engineering design we are able to achieve higher ISEER of 6.2, which is 24% more than current 5 star ISEER requirements.

FUNCTIONALITY

With Daikin's highest ISEER models, you get a product with a rating of 6.2* ISEER, which is best in the 5 star category and is extremely energy efficient. As per BEE standard, the qualifying criteria for 5 star rating AC is of 5 ISEER. It ensures that you get the highest performance in the 5 star category.

BENEFIT



It saves power; ideal for long usage



24% more energy efficiency as compared to 5 star AC with ISEER 5

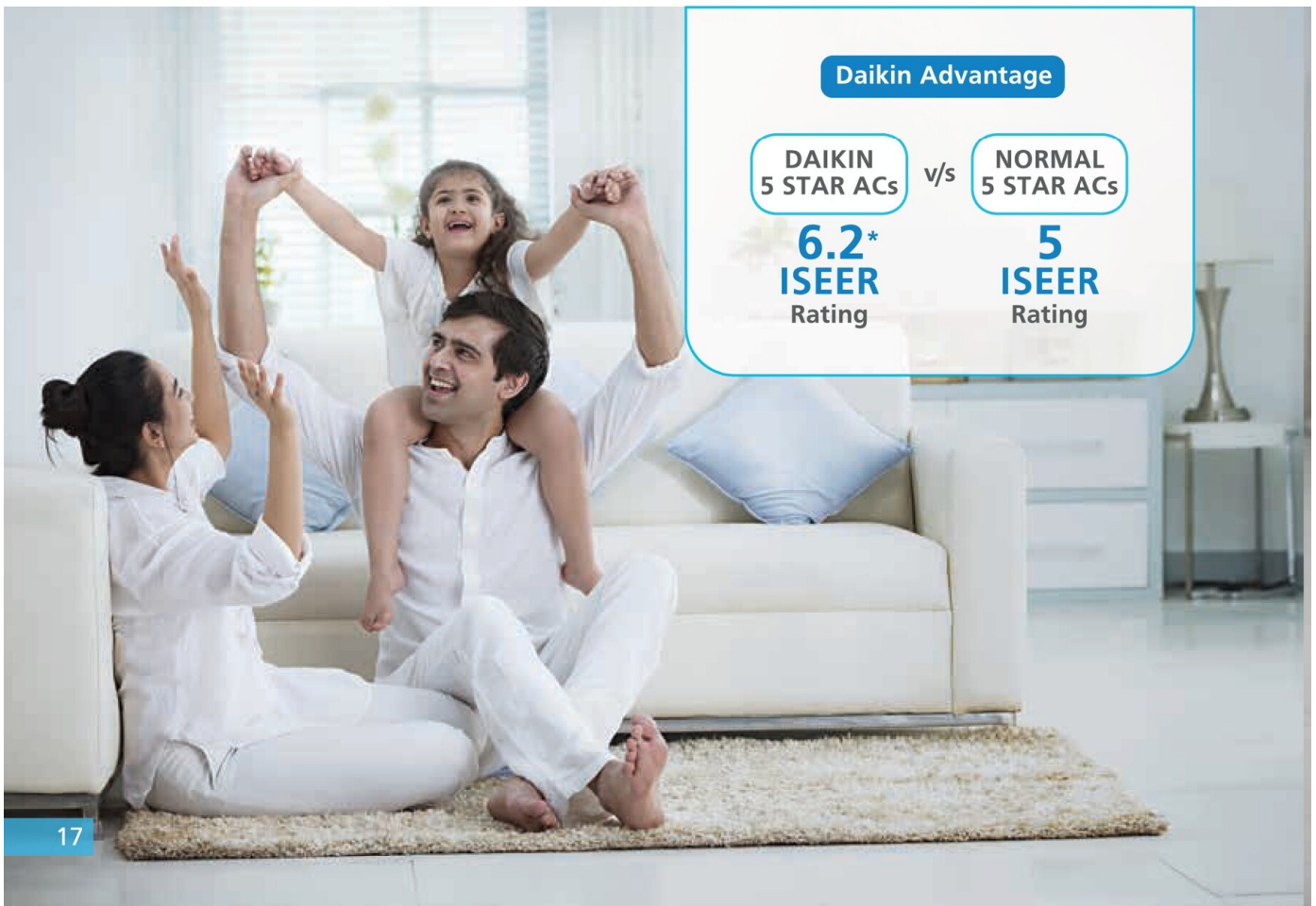


It helps in saving more electricity



Cools even at 56°C

*Model number FTKF35 with ISEER of 6.2



Daikin Advantage

**DAIKIN
5 STAR ACs**
6.2*
ISEER
Rating

v/s

**NORMAL
5 STAR ACs**
5
ISEER
Rating

Patented Streamer Discharge Technology



ROLE

Patented Streamer Discharge Technology eliminates viruses, bacteria, mould as well as hazardous chemical substances and allergens inside the room which cleans the inside air.

FUNCTIONALITY

It is a type of plasma discharge which generates high-speed electrons that combine with oxygen and nitrogen in the air. It then turns into active species with strong oxidative decomposition power, thereby eliminating viruses, bacteria, allergens such as mould, mites (droppings & dead mites), pollen and hazardous chemical substances such as formaldehyde.

BENEFIT



It deactivates viruses and bacteria to make the air clean to deliver peace of mind



It gets rid of the foul smells and mould to let you breathe purer air



It removes pollen and allergens, enabling you to breathe easy



INNOVATING TO LEAD

Getting Smarter with IoT



ROLE

The IoT has made an entrance to our homes in the recent years, bringing a revolution of comfort and changing the way people interact with gadgets. It lets you control your Room Air Conditioners through your phone or simply by saying a voice command.

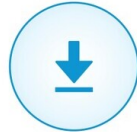
FUNCTIONALITY

Daikin IoT enabled Smart AC connects with Google Home/Amazon Alexa via Wi-Fi and also to your smart phone via Daikin India AC Manager app. This enables you to control the AC in a smarter way.

CONFIGURING DAIKIN IOT ENABLED SMART AIR CONDITIONER IS EASY



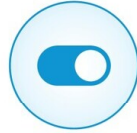
Download Daikin India AC Manager App from Google Play Store for Android and Apple Store for iOS.



Install the application.



Create your Login ID and set a password.



Switch on your Daikin's IoT enabled smart air AC.



Activate Wi-Fi in your AC.



Connect Daikin India AC Manager Application with your Daikin AC.



Now you can start operating your AC. Enjoy!



To integrate Daikin's IoT enabled smart AC with Google Home or Amazon Alexa:

- Activate your device (Google Home or Amazon Alexa)
- Log into your account
- Connect your device and the Daikin IoT AC through Wi-Fi network and start operating

BENEFIT



Users can control the AC with their voice in Hindi and English



No need to worry about misplacing the remote controller all over the house



Users have the option to cool down the room before entering through mobile app control



It lets you control your AC from anywhere in the world, this app supports multiple languages



INNOVATING TO LEAD

Intelligent Eye



ROLE

The Intelligent Eye sensor detects the human movement. If no one is in the room for more than 20 min, the operation automatically changes to energy saving operation by increasing set temperature +2°C.

FUNCTIONALITY

In this function, an infrared sensor detects human movement. If no presence is detected in the room for 20 minutes, the energy saving operation will start, and the intelligent Eye Lamp goes off. If human movement is detected again the intelligent Eye lamp lights up and energy saving operation terminates. This operation changes the temperature by +2°C in COOL /+2°C in DRY operation from the set temperature.

BENEFIT



There is no need to constantly turn the AC OFF and ON all the time



Setting of temperature higher ensures more Energy Saving



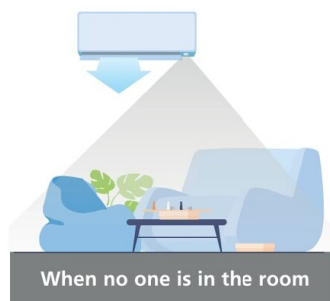
Reduces wastage of cooling



When someone is in the room

Normal Operation

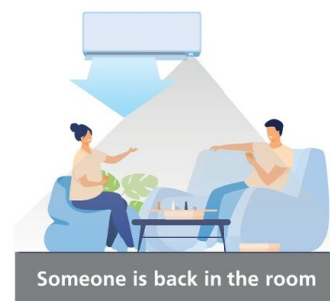
The Air Conditioner is in normal operation while the sensor is detecting human movement.



When no one is in the room

20 minutes after, start energy saving operation

The set temperature is shifted in +2°C steps.



Someone is back in the room

Back to normal operation

The Air Conditioner will return to normal operation when the sensor detects human movement again.

High Ambient Operation: 56°C



ROLE

We see rising temperatures across various cities in India. Coupled with the urban effect, it is challenging for air conditioners to deliver superior cooling. Most of the air conditioners are designed to deliver cooling at 35°C. Daikin air conditioners are designed to perform at extreme ambient conditions as high as 56°C.

FUNCTIONALITY

The inverter air conditioners runs effectively even when the ambient temperature is on the extreme high end. With patented swing compressor technology and integrated power module smart controllers it keeps cooling your room even at 56°C.

BENEFIT



Ideal for dry and tropical regions of the country



Less influence of outside temperature on cooling



Lower deration effect

*Available in FTKF series.



INNOVATING TO LEAD

Dew Clean Technology



ROLE

Dirt, which cannot be removed by the filter, accumulates on the heat exchanger. It becomes a breeding ground for bacteria and moulds and generates a foul odour. The Dew Clean Technology in Daikin ACs auto cleans the heat exchanger, helping get rid of bacteria, moulds and other unwanted particles.

FUNCTIONALITY

The Dew Clean Technology in Air Conditioners auto cleans the coil of Indoor unit heat exchanger. In this function, condensate water volume is used to clean the indoor unit heat exchanger. After cleaning of indoor unit heat exchanger, the condensed water drains out the dust particles, bacteria, mold from the indoor unit coil. After completion, unit will automatically switch to drying operation to dry the heat exchanger. It is recommended to perform this function once in a month for better result.

BENEFIT



Better cleaning of Indoor Unit Heat Exchanger ensures better airflow throughout the year



Consistent cooling performance of air conditioners

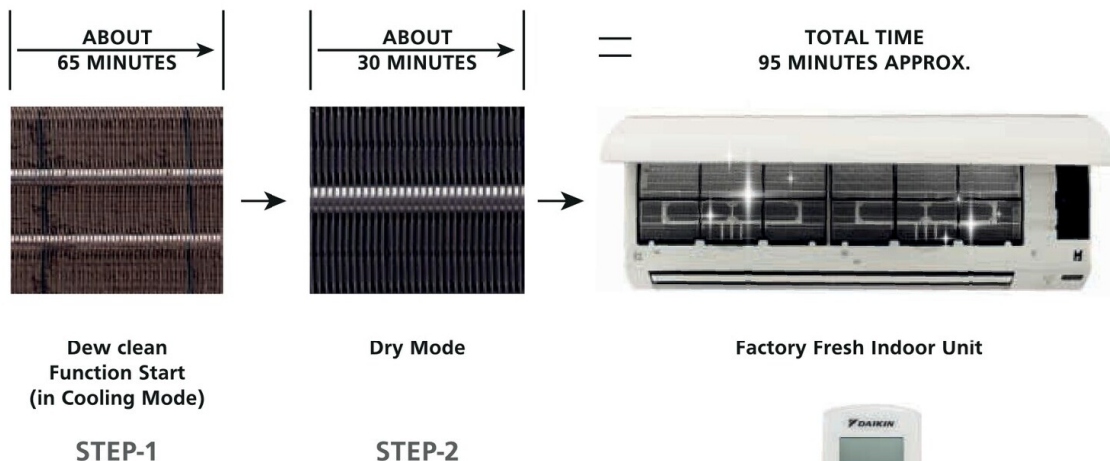


Ensure odour-free fresh air all the time



It suppresses mould formation and helps get rid of bacteria

WORKING OF DEW CLEAN TECHNOLOGY



HOW IT OPERATES ?

You can operate Dew Clean Technology function by simply pressing button on remote.





INNOVATING TO LEAD

Triple Display



ROLE

The Triple Display Function shows percentage estimation of the power consumed which is done on a real-time basis by our air conditioners unit. It helps the user to track and check the power consumed at that particular time by our AC's. In this function we can also see the set temperature and room temperature of Air Conditioners along with error code.

FUNCTIONALITY

Each press of the display button on remote will enable the user to see estimated Power Consumption percentage on a real time basis, Indoor Temperature Display and Set Temperature Display Respectively, this function allows users to see and monitor the approx. power saving and also to maintain the comfortable room temperature as per their requirement.

BENEFIT



With this Feature , the Consumer can monitor the estimated power consumption percentage of your AC at any given point in time, on a real time basis.



It monitors the running capacity of the AC unit. For example, if a 1.5 TR machine's power consumption display is showing 50%, it means that it is consuming approx. half of the power of the given unit, which reflects the monetary benefit on electrical saving to you.



Daikin Inverter Technology ensures your ac runs at optimum capacity as desired



With this feature consumer can see indoor temperature and set temperature along with error code

Note - Daikin Inverter Technology ensures your AC runs at optimum capacity as desired.

Anti-Corrosion Treatment



ROLE

The Benzotriazole Oil prevents the heat exchanger from corrosion thus ensuring it lasts longer to deliver optimum cooling for long time. With this, the corrosion of copper is delayed by up to 2.8 times.

FUNCTIONALITY

In Anti-Corrosion Treatment Function, a special coating of Benzotriazole oil is added to the copper coil to prevent corrosion. The treatment reduces the effect of nitric and acidic acid reaction on the copper coil of indoor & outdoor units. It is especially effective against the Indian climate conditions – rainy season, high humid area, coastal area and industrial smokes & pollutants areas.

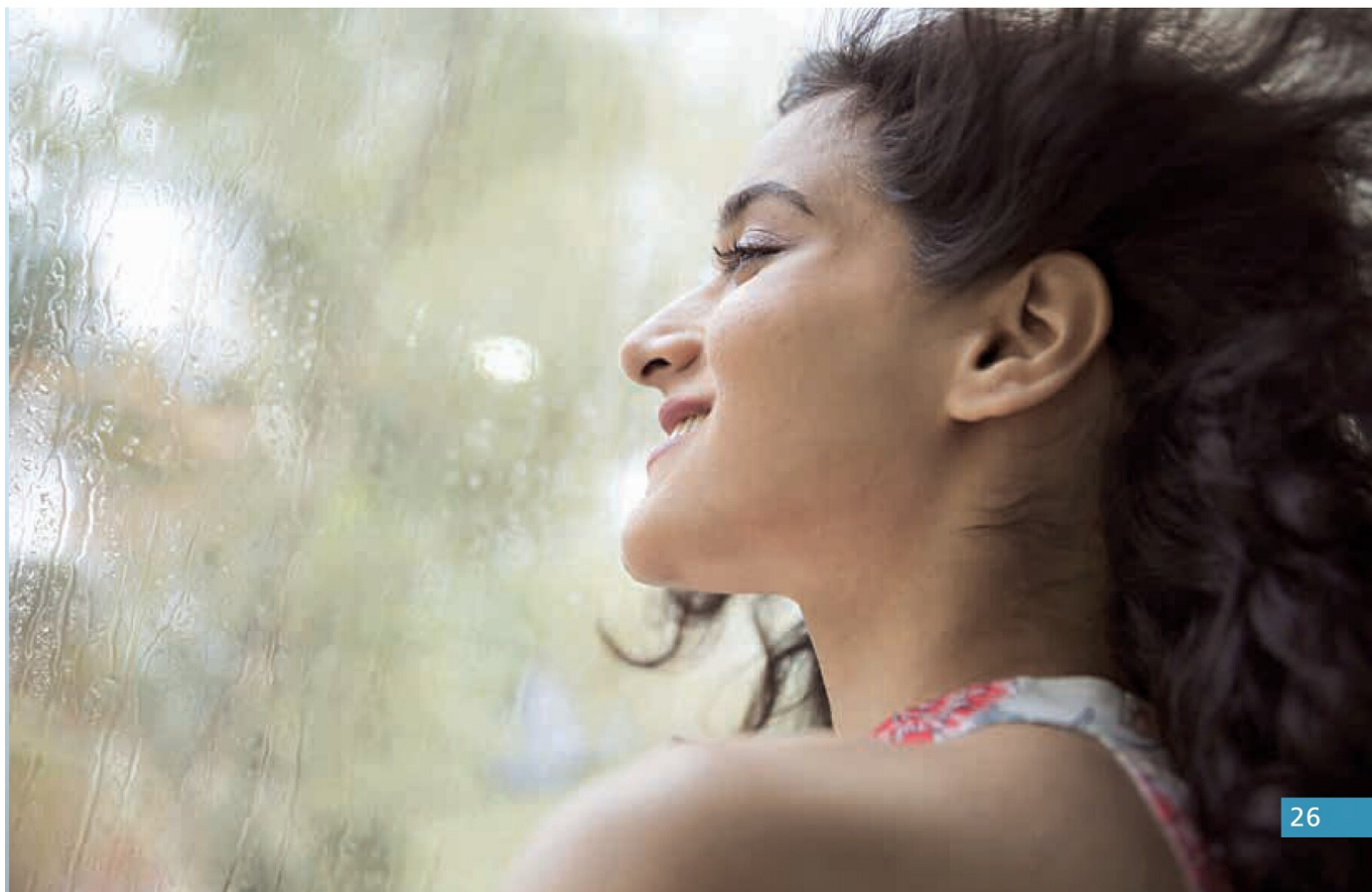
BENEFIT



Longer life of copper coil and air conditioners due to lowering corrosion impact



Durability of copper coil indoor & outdoor unit extends the lifetime of air conditioners by making the indoor & outdoor coil corrosion resistant



INNOVATING TO LEAD

Powerful Air Throw



CROSS FLOW EVAPORATOR FANS

With the Cross Flow Evaporator Fans, Daikin Air Conditioners ensure uniform cooling and a powerful air-flow that allows one to receive the cool air up to 16 meters* (52 Feet) away from the unit.

The unique Cross Flow Evaporator Fans and Power-air flow Dual Flaps help in cooling down all sorts of spaces, big and small. Moreover, they help ensure uniform cooling delivering peace of mind.

*Above given value is for 5kW (1.5 TR Capacity models) Inverter & Non Inverter model, air flow may vary model to model.



52 Feet
16 meters

Air Throw



Innovative Products that Delight

Every appliance that goes through Daikin's manufacturing lines is a product of years of R&D. Every product is perfected and re-perfected to ensure they deliver and carry the badge of trust.

Inverter (Split) Air Conditioners

The Inverter ACs from Daikin are a testament of the aspirations and innovation we carry out. This technology lowers the speed of the compressor once the room gets cool not only to save power but also to save the planet.



STREAMER DISCHARGE SERIES



10 YEARS WARRANTY
ON COMPRESSOR



5 YEARS WARRANTY
ON PCB



PATENTED
SWING COMPRESSOR



STABILIZER
INSIDE



POWER-AIRFLOW
DUAL FLAPS



POWER
CHILL



GOOD SLEEP
OFF TIMER



COANDA
AIRFLOW



ECONO
MODE



ANTI-CORROSION
TREATMENT





JTKJ Series

Available in: Cooling (kW) 3.52, 5.28, 6.2
IDU Colour: White



- Patented Streamer Discharge Technology
- Dew Clean Technology
- Intelligent Eye
- PM 1.0 Filter
- Triple Display
- Automatic Error Code Display
- Air Throw *16 Meters (52 Feet)
- Cools at 54° Celsius

*Air throw given for 5.28kW (1.5 TR) capacity, may vary model to model.

FTKN Series

Available in: Cooling (kW) 3.52, 5.0
IDU Colour: White



- Patented Streamer Discharge Technology
- Dew Clean Technology
- PM 2.5 Filter
- Triple Display
- 3D Airflow
- Automatic Error Code Display
- Air Throw *16 Meters (52 Feet)

*Air throw given for 5.0kW (1.5 TR) capacity, may vary model to model.



SMART+ SERIES



10 YEARS WARRANTY ON COMPRESSOR



5 YEARS WARRANTY ON PCB



PATENTED SWING COMPRESSOR



STABILIZER INSIDE



POWER-AIRFLOW DUAL FLAPS



POWER CHILL



GOOD SLEEP OFF TIMER



COANDA AIRFLOW



ECONO MODE



ANTI-CORROSION TREATMENT

FTKR Series

Available in: Cooling (kW) 3.52, 5.28, 6.2
IDU Colour: White



Voice controlled with Alexa & Google Home#



Mobile APP Control



Dew Clean Technology



PM 2.5 Filter



Triple Display



3D Airflow



Air Throw *16 Meters (52 Feet)



Cools at 54° Celsius

Note: Air Conditioner cloud connectivity subscription for one year comes along with the product. After one year, the subscription needs to be renewed by the customer. #In both Hindi and English languages. *Air throw given for 5.28kW (1.5 TR) capacity, may vary model to model.





HIGHEST ISEER & HIGH AMBIENT SERIES



10 YEARS WARRANTY ON COMPRESSOR



5 YEARS WARRANTY ON PCB



PATENTED SWING COMPRESSOR



STABILIZER INSIDE



POWER AIRFLOW DUAL FLAP*



POWER CHILL



GOOD SLEEP OFF TIMER



COANDA AIRFLOW



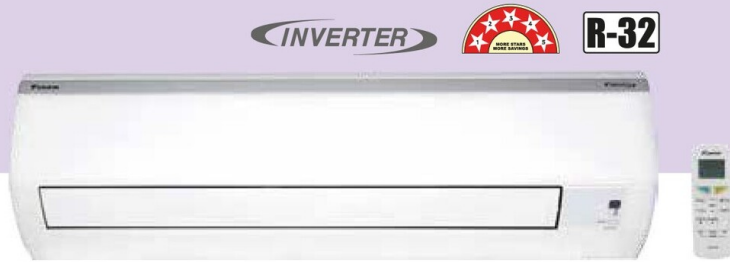
ECONO MODE



ANTI-CORROSION TREATMENT

FTKF Series

Available in: Cooling (kW) 3.35, 5
IDU Colour: White



Highest ISEER 6.2*



PM 2.5 Filter



3D Airflow



Dry Mode Function



Indoor Unit Quiet Operation



Air Throw *16 Meters (52 Feet)



Cools at 56° Celsius

*Air throw given for 5.0kW (1.5 TR) capacity, may vary model to model. Shown Indoor unit image is of FTKF50. Indoor unit look may vary for 1TR & 1.5TR. *Applicable only for FTKF35. *Available in 1 TR model FTKF35





5 STAR STANDARD+ SERIES

- 10 YEARS WARRANTY ON COMPRESSOR
- 5 YEARS WARRANTY ON PCB
- INDOOR UNIT QUIET OPERATION
- STABILIZER INSIDE
- POWER-AIRFLOW DUAL FLAPS
- POWER CHILL
- GOOD SLEEP OFF TIMER
- 24-HR ON/OFF TIMER
- ECONO MODE
- ANTI-CORROSION TREATMENT

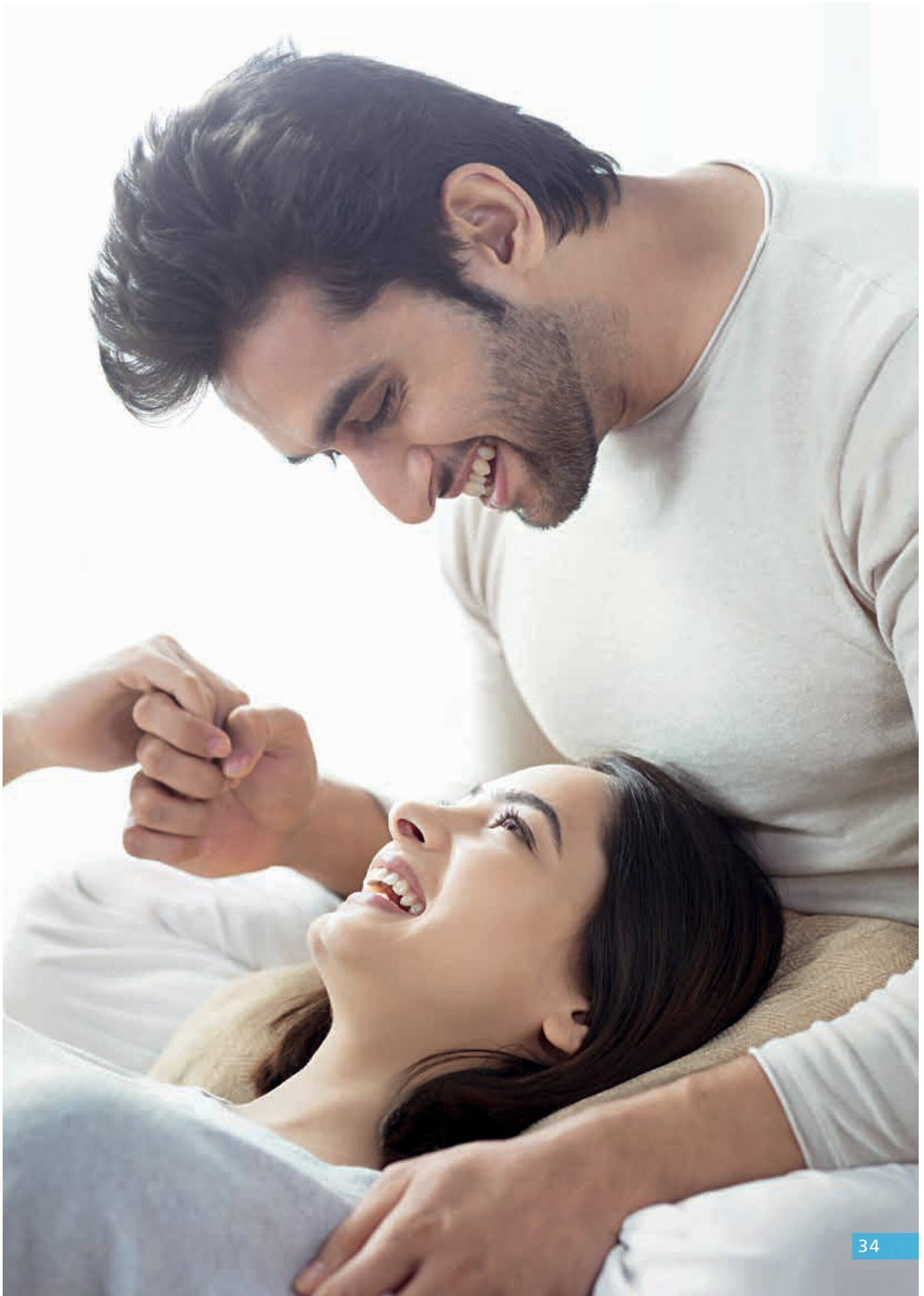


FTKZ Series

Available in: Cooling (kW) 5.28
IDU Colour: White



- ISEER 5.4
- PM 2.5 Filter
- I Feel
- 3D Airflow
- Temperature Display
- Air Throw 16 Meters (52 Feet)
- Cools at 54° Celsius



5 STAR STANDARD SERIES



10 YEARS WARRANTY
ON COMPRESSOR



5 YEARS WARRANTY
ON PCB



PATENTED
SWING COMPRESSOR



STABILIZER
INSIDE



POWER-AIRFLOW
DUAL FLAPS



POWER
CHILL



GOOD SLEEP
OFF TIMER



COANDA
AIRFLOW



ECONO
MODE



ANTI-CORROSION
TREATMENT





FTKM Series

Available in: Cooling (kW) 3.52, 5.28, 6.2
IDU Colour: White



INVERTER R-32



ISEER 5.2



Dew Clean Technology



PM 2.5 Filter



Triple Display



3D Airflow



Air Throw *16 Meters (52 Feet)



Cools at 54° Celsius

MTKM Series

Available in: Cooling (kW) 3.52, 5.28, 6.2
IDU Colour: White



INVERTER R-32



ISEER 5.2



Dew Clean Technology



PM 2.5 Filter



Triple Display



3D Airflow



Air Throw *16 Meters (52 Feet)



Cools at 54° Celsius

*Air throw given for 5.28kW (1.5 TR) capacity, may vary model to model.



3 STAR HOT AND COLD SERIES



10 YEARS WARRANTY ON COMPRESSOR



5 YEARS WARRANTY ON PCB



PATENTED SWING COMPRESSOR



STABILIZER INSIDE



POWER-AIRFLOW DUAL FLAPS



POWER CHILL



GOOD SLEEP OFF TIMER



COANDA AIRFLOW



ECONO MODE



ANTI-CORROSION TREATMENT

FTHT Series

Available in: Cooling (kW) 3.52, 5.0, 6.0
 Heating (kW) 3.52, 5.0, 6.0
 IDU Colour: White



Heating & Cooling Function Operation -10°C to 54°C



Dew Clean Technology*



PM 2.5 Filter



Triple Display



3D Airflow



Air Throw *16 Meters (52 Feet)



Cools at 54° Celsius

*Dew Clean Technology is available in Cooling only mode.
 *Air throw given for 5.0kW (1.5 TR) capacity, may vary model to model.





3 STAR SUPER SUMMER SERIES



10 YEARS WARRANTY ON COMPRESSOR



5 YEARS WARRANTY ON PCB



PATENTED SWING COMPRESSOR



STABILIZER INSIDE



POWER-AIRFLOW DUAL FLAPS



POWER CHILL



GOOD SLEEP OFF TIMER



COANDA AIRFLOW



ECONO MODE



ANTI-CORROSION TREATMENT



FTKT Series

Available in: Cooling (kW) 3.52, 5.28, 6.2
IDU Colour: White



Cools at High Ambient 54° C



Dew Clean Technology



PM 2.5 Filter



Triple Display



3D Airflow



Dry Mode Function



Air Throw *16 Meters (52 Feet)

*Air throw given for 5.28kW (1.5 TR) capacity, may vary model to model.



3 STAR STANDARD+ SERIES



10 YEARS WARRANTY ON COMPRESSOR



5 YEARS WARRANTY ON PCB



PATENTED SWING COMPRESSOR



STABILIZER INSIDE



POWER-AIRFLOW DUAL FLAPS



POWER CHILL



GOOD SLEEP OFF TIMER



COANDA AIRFLOW



ECONO MODE



ANTI-CORROSION TREATMENT





FTKL Series

Available in: Cooling (kW) 3.52, 5.0, 6.0, 7.1
IDU Colour: White



INVERTER R-32



Dew Clean Technology



PM 2.5 Filter



Triple Display



3D Airflow



Automatic Error Code Display



Air Throw *16 Meters (52 Feet)



Cools at 52° Celsius

Note: Some features and indoor unit look may differ in the FTKL71 model. Refer feature details page.

DTKL Series

Available in: Cooling (kW) 3.52, 5.0, 6.0
IDU Colour: White



INVERTER R-32



Dew Clean Technology



Anti Microbial Filter



Triple Display



3D Airflow



Automatic Error Code Display



Air Throw *16 Meters (52 Feet)



Cools at 52° Celsius

*Air throw given for 5.0kW (1.5 TR) capacity, may vary model to model.



ATKL Series

Available in: Cooling (kW) 3.52, 5.0, 6.0
 IDU Colour: White



Dew Clean Technology



Titanium Apatite Deodorizing Air Purifying Filter (TAD)



Triple Display



3D Airflow



Automatic Error Code Display



Air Throw *16 Meters (52 Feet)



Cools at 52° Celsius

MTKL Series

Available in: Cooling (kW) 3.52, 5.0
 IDU Colour: White



Dew Clean Technology



PM 2.5 Filter



Triple Display



3D Airflow



Automatic Error Code Display



Air Throw *16 Meters (52 Feet)

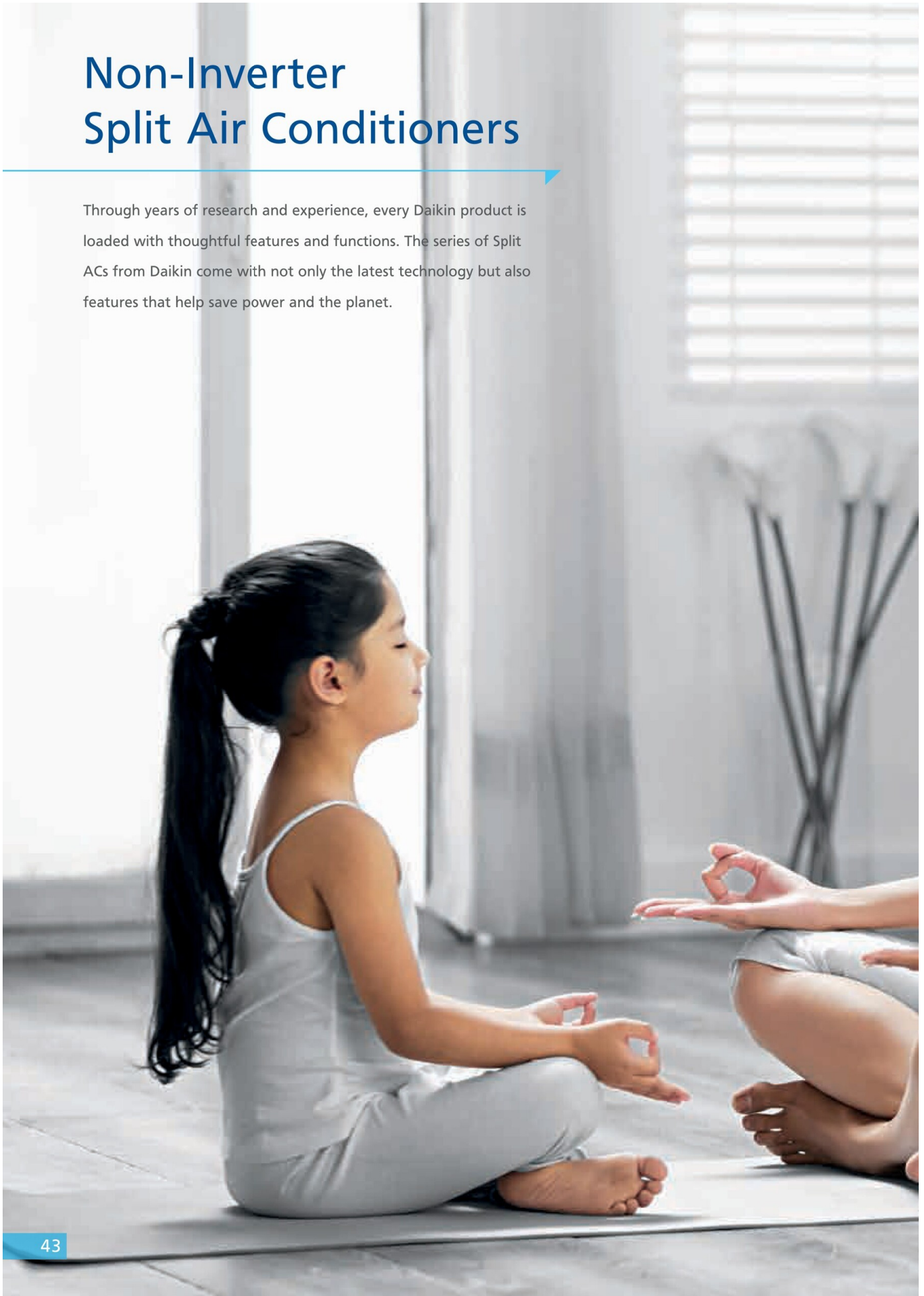


Cools at 52° Celsius



Non-Inverter Split Air Conditioners

Through years of research and experience, every Daikin product is loaded with thoughtful features and functions. The series of Split ACs from Daikin come with not only the latest technology but also features that help save power and the planet.







3 STAR STANDARD SERIES



5 YEARS WARRANTY ON COMPRESSOR



1 YEAR COMPREHENSIVE WARRANTY ON MACHINE



STABILIZER FREE



ECONO MODE



COANDA AIRFLOW



AUTO FAN SPEED



CHILD LOCK



GOOD SLEEP OFF TIMER



SMELL PROOF



ANTI-CORROSION TREATMENT

FTL Series

Available in: Cooling (kW) 2.8, 3.35, 5.05
IDU Colour: White



Power Airflow Dual Flap



PM 2.5 Filter



Dry Mode Function



Power Chill



Backlit Remote Controller



Self Diagnosis



Air Throw *16 Meters (52 Feet)

*Air throw given for 5.05kW (1.5 TR) capacity, may vary model to model. Refer to the technical specification sheet.





STANDARD SERIES



5 YEARS WARRANTY ON COMPRESSOR



1 YEAR COMPREHENSIVE WARRANTY ON MACHINE



STABILIZER FREE



ECONO MODE



COANDA AIRFLOW



AUTO FAN SPEED



CHILD LOCK



GOOD SLEEP OFF TIMER



SMELL PROOF



ANTI-CORROSION TREATMENT

FTE Series

Available in: Cooling (kW) 6.4
IDU Colour: White



R-32



Power Airflow Dual Flap



Dry Mode Function



Self Diagnosis



Backlit Remote Controller



Wipe Clean Flat Panel



Auto-restart (after power failure)



Air Throw 16 Meters (52 Feet)



SPECIFICATIONS Streamer Discharge Series

Model name	Indoor unit (IDU)		JTKJ35UV16W	JTKJ50UV16U	JTKJ60UV16U
	Outdoor unit (ODU)		RKJ35UV16W	RKJ50UV16U	RKJ60UV16U
Star Rating*			5 Star	5 Star	5 Star
Rated Power Supply	Phase/Frequency/Voltage		1φ/50Hz/230V	1φ/50Hz/230V	1φ/50Hz/230V
Power Supply Intake			Outdoor unit	Outdoor unit	Outdoor unit
Rated Cooling Capacity Full/Half (min.~max.)	kW		3.52/1.76 (1.09~4.0)	5.28/2.64 (1.58~5.75)	6.2/3.1 (1.25~7)
	Btu/h		12000/6000 (3720~13650)	18000/9000 (5390~19620)	21150/10580 (4260~23880)
Cooling Capacity @ 43 Deg °C	%		100%	100%	100%
Rated Power Consumption Full/Half (min.~max.)	W		940/290 (196~1150)	1325/460 (267~1639)	1575/535 (200~1950)
Rated Annual Power Consumption	kWh		523.54	785.67	923.07
Rated ISEER	Wh/Wh		5.2	5.2	5.2
Voltage Range (Stabilizer Inside)	V		130~285	130~285	130~285
Operating Current	A		4.3	6.1	7.2
Indoor unit (IDU)					
Panel Colour			White	White	White
IDU Dimension (HxWxD)	mm		298x800x229	298x885x229	298x885x229
Package Dimension (HxWxD)			375x895x325	375x980x325	375x980x325
IDU Net Weight (Gross Weight)	kg		9.5 (12.5)	11.5 (14.5)	11.5 (14.5)
Airflow Rate	Feet ³ /min (cfm)		420	593	593
	m ³ /min (cmm)		11.9	16.8	16.8
Moisture Removal	l/hr (Litres/Hour)		1	1.8	2.3
Operation Sound H/MH/M/ML/L/SL	dBA		40/38/36/33/30/27	48/46/43/41/38/32	48/46/43/41/38/32
Outdoor unit (ODU)					
ODU Dimension (HxWxD)	mm		550x675x284	595x845x300	695x930x350
Package Dimension (HxWxD)			620x825x400	680x1035x410	775x1094x486
ODU Net Weight (Gross Weight)	kg		24 (30)	33 (40)	48.5 (56.5)
Compressor Type			Swing Compressor	Swing Compressor	Swing Compressor
Refrigerant			R-32	R-32	R-32
Breaker Size	A		15	20	20
Piping Length	Charge-Less		10	10	10
	Max. Length		15	20	25
	Max. Height		12	16	20
Piping Connection	Gas / Liquid		mm (Inch) Φ9.5/φ6.4 (3/8"/1/4")	Φ12.7/φ6.4 (1/2"/1/4")	Φ12.7/φ6.4 (1/2"/1/4")
Operating Ambient Temperature Range	Cooling (Min~Max) °C DB		20~54	20~54	20~54

Model name	Indoor unit (IDU)		FTKN35UV16W	FTKN50UV16V
	Outdoor unit (ODU)		RKN35UV16W	RKN50UV16V
Star Rating*			3 Star	3 Star
Rated Power Supply	Phase/Frequency/Voltage		1φ/50Hz/230V	1φ/50Hz/230V
Power Supply Intake			Outdoor unit	Outdoor unit
Rated Cooling Capacity Full/Half (min.~max.)	kW		3.52/1.76 (1.07~3.7)	5.0/2.5 (1.75~5.2)
	Btu/h		12000/6000 (3650~12620)	17100/8550 (5970~17440)
Cooling Capacity @ 43 Deg °C	%		100%	100%
Rated Power Consumption Full/Half (min.~max.)	W		1200/383 (210~1200)	1670/554 (375~1750)
Rated Annual Power Consumption	kWh		680.40	966.47
Rated ISEER	Wh/Wh		4.00	4.00
Voltage Range (Stabilizer Inside)	V		130~285	130~285
Operating Current	A		5.43	7.41
Indoor unit (IDU)				
Panel Colour			White	White
IDU Dimension (HxWxD)	mm		298x800x229	298x885x229
Package Dimension (HxWxD)			375x895x325	375x980x325
IDU Net Weight (Gross Weight)	kg		9.5 (12.5)	10.5 (13.5)
Airflow Rate	Feet ³ /min (cfm)		420	572
	m ³ /min (cmm)		11.9	16.2
Moisture Removal	l/hr (Litres/Hour)		1	1.6
Operation Sound H/MH/M/ML/L/SL	dBA		42/40/37/34/30/27	46/43/41/38/35/32
Outdoor unit (ODU)				
ODU Dimension (HxWxD)	mm		550x675x284	595x845x300
Package Dimension (HxWxD)			620x825x400	680x1035x410
ODU Net Weight (Gross Weight)	kg		21.5 (27)	28 (35)
Compressor Type			Swing Compressor	Swing Compressor
Refrigerant			R-32	R-32
Breaker Size	A		15	20
Piping Length	Charge-Less		10	10
	Max. Length		15	20
	Max. Height		12	16
Piping Connection	Gas / Liquid		mm (Inch) Φ9.5/φ6.4 (3/8"/1/4")	Φ12.7/φ6.4 (1/2"/1/4")
Operating Ambient Temperature Range	Cooling (Min~Max) °C DB		20~52	20~52

Measurement conditions:

- Cooling capacity is based on: indoor temp. 27°C DB, 19°C WB; outdoor temp. 35°C DB, piping length 5 m.
- Sound levels are based on temperature conditions 1. above with 5m piping length. These are anechoic conversion values. These values are normally somewhat higher during actual operation as a result of ambient conditions.

Cooling and heating capacities above are rounded off to first decimal. 1TR (Ton of Refrigeration) = ~3.517 kilowatt.

*Star Rating mentioned above is as per norms defined by Bureau of Energy Efficiency, Ministry of Power, Government of India.

" Value given in Inch.

As per Continuing Policy of Product Innovation at Daikin, The Design, Technical Specifications, Features, Look may change without prior notice.

SPECIFICATIONS Smart+ Series

Model name	Indoor unit (IDU)		FTKR35UV16W	FTKR50UV16U	FTKR60UV16U
	Outdoor unit (ODU)		RKR35UV16W	RKR50UV16U	RKR60UV16U
Star Rating*			5 Star	5 Star	5 Star
Rated Power Supply	Phase/Frequency/Voltage		1 ϕ /50Hz/230V	1 ϕ /50Hz/230V	1 ϕ /50Hz/230V
Power Supply Intake			Outdoor unit	Outdoor unit	Outdoor unit
Rated Cooling Capacity Full/Half (min.~max.)	kW		3.52/1.76 (1.09~4.0)	5.28/2.64 (1.58~5.75)	6.2/3.1 (1.25~7)
	Btu/h		12000/6000 (3720~13650)	18000/9000 (5390~19620)	21150/10580 (4260~23880)
Cooling Capacity @ 43 Deg °C	%		100%	100%	100%
Rated Power Consumption Full/Half (min.~max.)	W		940/290 (196~1150)	1325/460 (267~1639)	1575/535 (200~1950)
Rated Annual Power Consumption	kWh		523.54	785.67	923.07
Rated ISEER	Wh/Wh		5.2	5.2	5.2
Voltage Range (Stabilizer Inside)	V		130~285	130~285	130~285
Operating Current	A		4.3	6.1	7.2
Indoor unit (IDU)					
Panel Colour			White	White	White
IDU Dimension (HxWxD)	mm		298x800x229	298x885x229	298x885x229
Package Dimension (HxWxD)			375x895x325	375x980x325	375x980x325
IDU Net Weight (Gross Weight)	kg		9.5 (12.5)	11 (14)	11.5 (14.5)
Airflow Rate	Feet ³ /min (cfm)		420	593	593
	m ³ /min (cmm)		11.9	16.8	16.8
Moisture Removal	l/hr (Litres/Hour)		1	1.8	2.3
Operation Sound H/MH/M/ML/L/SL	dBA		42/40/37/34/30/27	48/46/43/41/38/32	48/46/43/41/38/32
Outdoor unit (ODU)					
ODU Dimension (HxWxD)	mm		550x675x284	595x845x300	695x930x350
Package Dimension (HxWxD)			620x825x400	680x1035x410	775x1094x486
ODU Net Weight (Gross Weight)	kg		24 (30)	33 (40)	48.5 (56.5)
Compressor Type			Swing Compressor	Swing Compressor	Swing Compressor
Refrigerant			R-32	R-32	R-32
Breaker Size	A		15	20	20
Piping Length	Charge-Less		10	10	10
	Max. Length		15	20	25
	Max. Height		12	16	20
Piping Connection	Gas / Liquid	mm (Inch)	Φ 9.5/ ϕ 6.4 (3/8"/1/4")	Φ 12.7/ ϕ 6.4 (1/2"/1/4")	Φ 12.7/ ϕ 6.4 (1/2"/1/4")
Operating Ambient Temperature Range	Cooling (Min~Max)	°C DB	20~54	20~54	20~54

Note: Air Conditioner cloud connectivity subscription for one year comes along with the product. After one year, the subscription needs to be renewed by the customer.

SPECIFICATIONS Highest ISEER & High Ambient Series

Model name	Indoor unit (IDU)		FTKF35UV16U	FTKF50UV16T
	Outdoor unit (ODU)		RKF35UV16U	RKF50UV16T
Star Rating*			5 Star	5 Star
Rated Power Supply	Phase/Frequency/Voltage		1 ϕ /50Hz/230V	1 ϕ /50Hz/230V
Power Supply Intake			Outdoor unit	Outdoor unit
Rated Cooling Capacity Full/Half (min.~max.)	kW		3.35/1.67 (1.2~4.5)	5.0/2.5 (1.25~6)
	Btu/h		11900/5970(4095~15350)	17060/8530(5120~20470)
Cooling Capacity @ 43 Deg °C	%		100%	100%
Rated Power Consumption Full/Half (min.~max.)	W		683/252(190~1230)	1095/400 (200~1480)
Rated Annual Power Consumption	kWh		418.52	667.36
Rated ISEER	Wh/Wh		6.2	5.8
Voltage Range (Stabilizer Inside)	V		130~285	130~285
Operating Current	A		3.16	5.1
Indoor unit (IDU)				
Panel Colour			White	White
IDU Dimension (HxWxD)	mm		298x885x229	310x1100x239
Package Dimension (HxWxD)			375x980x325	330x1230x385
IDU Net Weight (Gross Weight)	kg		10.5 (13.5)	12.5 (16.6)
Airflow Rate	Feet ³ /min (cfm)		512	635
	m ³ /min (cmm)		14.5	18
Moisture Removal	l/hr (Litres/Hour)		1	3.3
Operation Sound H/MH/M/ML/L/SL	dBA		44/41/39/36/33/30	47/44/41/39/36/30
Outdoor unit (ODU)				
ODU Dimension (HxWxD)	mm		595x845x300	695x930x350
Package Dimension (HxWxD)			680x1035x410	775x1094x486
ODU Net Weight (Gross Weight)	kg		31.5 (38.5)	48.5 (56.5)
Compressor Type			Swing Compressor	Swing Compressor
Refrigerant			R-32	R-32
Breaker Size	A		15	20
Piping Length	Charge-Less		10	10
	Max. Length		15	20
	Max. Height		12	16
Piping Connection	Gas / Liquid	mm (Inch)	Φ 9.5/ ϕ 6.4 (3/8"/1/4")	Φ 12.7/ ϕ 6.4 (1/2"/1/4")
Operating Ambient Temperature Range	Cooling (Min~Max)	°C DB	20~56	20~56

Measurement conditions:

1. Cooling capacity is based on: indoor temp. 27°C DB, 19°C WB; outdoor temp. 35°C DB, piping length 5 m.

2. Sound levels are based on temperature conditions 1. above with 5m piping length. These are anechoic conversion values. These values are normally somewhat higher during actual operation as a result of ambient conditions.

Cooling and heating capacities above are rounded off to first decimal. 1TR (Ton of Refrigeration) = ~3.517 kilowatt.

*Star Rating mentioned above is as per norms defined by Bureau of Energy Efficiency, Ministry of Power, Government of India.

**Value given in Inch.

As per Continuing Policy of Product Innovation at Daikin, The Design, Technical Specifications, Features, Look may change without prior notice.

SPECIFICATIONS 5 Star Standard+ Series

Model name	Indoor unit (IDU)		FTKZ50UV16U4
	Outdoor unit (ODU)		RKZ50UV16U4
Star Rating*			5 Star
Rated Power Supply	Phase/Frequency/Voltage		1φ 50Hz/230V
Power Supply Intake			Outdoor unit
Rated Cooling Capacity Full/Half (min.~max.)	kW	5.28/2.64 (1.0~6.0)	
	Btu/h	18000/9000 (3410~20470)	
Cooling capacity @ 46°C	%	100%	
Rated Power Consumption Full/Half (min.~max.)	W	1290/439 (200~1700)	
Rated Annual Power Consumption	kWh	756.78	
Rated ISEER	Wh/Wh	5.40	
Voltage Range (Stabilizer Inside)	V	140~265	
Operating Current	A	5.8	
Indoor unit (IDU)			
Panel Colour			White
IDU Dimension (HxWxD)	mm		298x885x229
Package Dimension (HxWxD)			375x980x325
IDU Net Weight (Gross Weight)	kg		11.5 (14)
Airflow Rate	Feet ³ /min (cfm)		593
	m ³ /min (cmm)		16.8
Moisture Removal	l/hr (Litres/Hour)		1.8
Operation Sound H/MH/M/ML/L/SL	dBA		47/45/43/37/32
Outdoor unit (ODU)			
ODU Dimension (HxWxD)	mm		595x845x300
Package Dimension (HxWxD)			680x1035x410
ODU Net Weight (Gross Weight)	kg		35.5(42.5)
Compressor Type			Twin Rotary Compressor
Refrigerant			R-32
Breaker Size	A		20
Piping Length	Charge-Less		10
	Max. Length		30
	Max. Height		20
Piping Connection	Gas / Liquid	mm (Inch)	Φ12.7/φ6.4 (1/2"/1/4")
Operating Ambient Temperature Range	Cooling (Min~Max)	°C DB	10~54

SPECIFICATIONS 5 Star Standard Series

Model name	Indoor unit (IDU)		FTKM35UV16W	FTKM50UV16U/V	FTKM60UV16U
	Outdoor unit (ODU)		RKM35UV16W	RKM50UV16U/V	RKM60UV16U
Star Rating*			5 Star	5 Star	5 Star
Rated Power Supply	Phase/Frequency/Voltage		1φ/50Hz/230V	1φ/50Hz/230V	1φ/50Hz/230V
Power Supply Intake			Outdoor unit	Outdoor unit	Outdoor unit
Rated Cooling Capacity Full/Half (min.~max.)	kW	3.52/1.76 (1.09~4.0)		5.28/2.64 (1.58~5.75)	6.2/3.1 (1.25~7)
	Btu/h	12000/6000 (3720~13650)		18000/9000 (5390~19620)	21150/10580 (4260~23880)
Cooling capacity @ 46°C	%	100%		100%	100%
Rated Power Consumption Full/Half (min.~max.)	W	940/290 (196~1150)		1360/450 (267~1639)	1575/535 (200~1950)
Rated Annual Power Consumption	kWh	523.54		785.67	923.07
Rated ISEER	Wh/Wh	5.2		5.2	5.2
Voltage Range (Stabilizer Inside)	V	130~285		130~285	130~285
Operating Current	A	4.3		6.1	7.2
Indoor unit (IDU)					
Panel Colour			White	White	White
IDU Dimension (HxWxD)	mm		298x800x229	298x885x229	298x885x229
Package Dimension (HxWxD)			375x895x325	375x980x325	375x980x325
IDU Net Weight (Gross Weight)	kg		9.5 (12.5)	11 (14)	11.5 (14.5)
Airflow Rate	Feet ³ /min (cfm)		420	593	593
	m ³ /min (cmm)		11.9	16.8	16.8
Moisture Removal	l/hr (Litres/Hour)		1	1.8	2.3
Operation Sound H/MH/M/ML/L/SL	dBA		42/40/37/34/30/27	48/46/43/41/38/32	48/46/43/41/38/32
Outdoor unit (ODU)					
ODU Dimension (HxWxD)	mm		550x675x284	595x845x300	695x930x350
Package Dimension (HxWxD)			620x825x400	680x1035x410	775x1094x486
ODU Net Weight (Gross Weight)	kg		24 (30)	32.5 (39.5)	48.5 (56.5)
Compressor Type			Swing Compressor	Swing Compressor	Swing Compressor
Refrigerant			R-32	R-32	R-32
Breaker Size	A		15	20	20
Piping Length	Charge-Less		10	10	10
	Max. Length		15	20	25
	Max. Height		12	16	20
Piping Connection	Gas / Liquid	mm (Inch)	Φ9.5/φ6.4 (3/8"/1/4")	Φ12.7/φ6.4 (1/2"/1/4")	Φ12.7/φ6.4 (1/2"/1/4")
Operating Ambient Temperature Range	Cooling (Min~Max)	°C DB	20~54	20~54	20~54

Measurement conditions:

- Cooling capacity is based on: indoor temp. 27°C DB, 19°C WB; outdoor temp. 35°C DB, piping length 5 m.
- Sound levels are based on temperature conditions 1. above with 5m piping length. These are anechoic conversion values. These values are normally somewhat higher during actual operation as a result of ambient conditions.

Cooling and heating capacities above are rounded off to first decimal. 1TR (Ton of Refrigeration) = ~3.517 kilowatt.

*Star Rating mentioned above is as per norms defined by Bureau of Energy Efficiency, Ministry of Power, Government of India.

°Value given in Inch.

As per Continuing Policy of Product Innovation at Daikin, The Design, Technical Specifications, Features, Look may change without prior notice.

SPECIFICATIONS 5 Star Standard Series

Model name	Indoor unit (IDU)		MTKM35UV16W	MTKM50UV16U/V	MTKM60UV16U
	Outdoor unit (ODU)		RKM35UV16W	RKM50UV16U/V	RKM60UV16U
Star Rating*			5 Star	5 Star	5 Star
Rated Power Supply	Phase/Frequency/Voltage		1 ϕ /50Hz/230V	1 ϕ /50Hz/230V	1 ϕ /50Hz/230V
Power Supply Intake			Outdoor unit	Outdoor unit	Outdoor unit
Rated Cooling Capacity Full/Half (min.~max.)	kW		3.52/1.76 (1.09~4.0)	5.28/2.64 (1.58~5.75)	6.2/3.1 (1.25~7)
	Btu/h		12000/6000 (3720~13650)	18000/9000 (5390~19620)	21150/10580 (4260~23880)
Cooling capacity @ 46°C	%		100%	100%	100%
Rated Power Consumption Full/Half (min.~max.)	W		940/290 (196~1150)	1360/450 (267~1639)	1575/535 (200~1950)
Rated Annual Power Consumption	kWh		523.54	785.67	923.07
Rated ISEER	Wh/Wh		5.2	5.2	5.2
Voltage Range (Stabilizer Inside)	V		130~285	130~285	130~285
Operating Current	A		4.3	6.1	7.2
Indoor unit (IDU)					
Panel Colour			White	White	White
IDU Dimension (HxWxD)	mm		298x800x229	298x885x229	298x885x229
Package Dimension (HxWxD)			375x895x325	375x980x325	375x980x325
IDU Net Weight (Gross Weight)	kg		9.5 (12.5)	11 (14)	11.5 (14.5)
Airflow Rate	Feet ³ /min (cfm)		420	593	593
	m ³ /min (cmm)		11.9	16.8	16.8
Moisture Removal	l/hr (Litres/Hour)		1	1.8	2.3
Operation Sound H/MH/M/ML/L/SL	dBA		42/40/37/34/30/27	48/46/43/41/38/32	48/46/43/41/38/32
Outdoor unit (ODU)					
ODU Dimension (HxWxD)	mm		550x675x284	595x845x300	695x930x350
Package Dimension (HxWxD)			620x825x400	680x1035x410	775x1094x486
ODU Net Weight (Gross Weight)	kg		24 (30)	32.5 (39.5)	48.5 (56.5)
Compressor Type			Swing Compressor	Swing Compressor	Swing Compressor
Refrigerant			R-32	R-32	R-32
Breaker Size	A		15	20	20
Piping Length	Charge-Less		10	10	10
	Max. Length		15	20	25
	Max. Height		12	16	20
Piping Connection	Gas / Liquid	mm (Inch)	Φ9.5/φ6.4 (3/8"/1/4")	Φ12.7/φ6.4 (1/2"/1/4")	Φ12.7/φ6.4 (1/2"/1/4")
Operating Ambient Temperature Range	Cooling (Min~Max)	°C DB	20~54	20~54	20~54

Measurement conditions:

1. Cooling capacity is based on: indoor temp. 27°C DB, 19°C WB; outdoor temp. 35°C DB, piping length 5 m.

2. Sound levels are based on temperature conditions 1. above with 5m piping length. These are anechoic conversion values. These values are normally somewhat higher during actual operation as a result of ambient conditions.

Cooling and heating capacities above are rounded off to first decimal. 1TR (Ton of Refrigeration) = ~3.517 kilowatt.

*Star Rating mentioned above is as per norms defined by Bureau of Energy Efficiency, Ministry of Power, Government of India.

†Value given in Inch.

As per Continuing Policy of Product Innovation at Daikin, The Design, Technical Specifications, Features, Look may change without prior notice.

SPECIFICATIONS 3 Star Hot and Cold Series

Model name	Indoor unit (IDU)		FTHT35UV16W	FTHT50UV16V	FTHT60UV16U	
	Outdoor unit (ODU)		RHT35UV16W	RHT50UV16V	RHT60UV16U	
Star Rating*			3 Star	3 Star	3 Star	
Rated Power Supply	Phase/Frequency/Voltage		1 ϕ /50Hz/230V	1 ϕ /50Hz/230V	1 ϕ /50Hz/230V	
Power Supply Intake			Outdoor unit	Outdoor unit	Outdoor unit	
Rated Cooling Capacity Full/Half (min.~max.)		kW	3.52/1.76 (1.07 ~3.7)	5.0/2.5 (1.75~5.2)	6.0/3.0 (1.75~6.5)	
		Btu/h	12000 / 6000 (3650~12620)	17100/8550 (5970~17740)	20470/10235 (5970~22180)	
Rated Heating Capacity Full (min.~max.)		kW	3.52 (1.2~3.7)	5.0 (1.75~5.2)	6.0 (1.3~6000)	
		Btu/h	12000 (4100~12620)	17100 (4450~17700)	20500 (4450~20500)	
Cooling Capacity @ 43 Deg °C			100%	100%	100%	
Rated Power Consumption Full/Half (min.~max.)	Cooling	W	1145/335 (210~1200)	1600/483 (375~1750)	1820/608 (350~2100)	
	Heating	W	950 (270~1060)	1460 (340~1600)	1880 (330~1900)	
Rated Annual Power Consumption			kWh	620.32	881.05	1057.21
Rated ISEER			Wh/Wh	4.39	4.39	4.39
Voltage Range (Stabilizer Inside)	Cooling	V	130~285	130~285	130~285	
	Heating	V	130~285	130~285	130~285	
Operating Current	Cooling	A	5.08	7.10	8.07	
	Heating	A	4.21	6.48	8.34	
Indoor unit (IDU)						
Panel Colour			White	White	White	
IDU Dimension (HxWxD)			298x800x229	298x885x229	298x885x229	
Package Dimension (HxWxD)	mm		375x895x325	375x980x325	375x980x325	
IDU Net Weight (Gross Weight)			kg	9.5 (12.5)	10.5 (13.5)	11 (14)
Airflow Rate	Cooling	Feet ³ /min (cfm)	420	572	593	
		m ³ /min (cmm)	11.9	16.2	16.8	
Airflow Rate	Heating	Feet ³ /min (cfm)	420	572	593	
		m ³ /min (cmm)	11.9	16.2	16.8	
Moisture Removal			l/hr (Litres/Hour)	1	1.6	2.3
Operation Sound H/MH/M/ML/L/SL	Cooling	dBA	42/40/37/34/30/27	46/43/41/38/35/32	48/46/43/41/38/32	
	Heating	dBA	42/40/37/34/30/27	46/43/41/38/35/32	48/46/43/41/38/32	
Outdoor unit (ODU)						
ODU Dimension (HxWxD)			mm	550x675x284	595x845x300	595x845x300
Package Dimension (HxWxD)			mm	620x825x400	680x1035x410	680x1035x410
ODU Net Weight (Gross Weight)			kg	22 (27)	29.5 (36)	33 (40)
Compressor Type				Swing Compressor	Swing Compressor	Swing Compressor
Refrigerant				R-32	R-32	R-32
Breaker Size			A	15	20	20
Piping Length	Charge-Less	m	10	10	10	
	Max. Length		15	20	25	
	Max. Height		12	16	20	
Piping Connection	Gas / Liquid	mm (Inch)	Φ9.5/φ6.4 (3/8"/1/4")	Φ12.7/φ6.4 (1/2"/1/4")	Φ12.7/φ6.4 (1/2"/1/4")	
Operating Ambient Temperature Range	Cooling (Min~Max)	°C DB	20~54	20~54	20~54	
	Heating(Min~Max)	°C DB	-10~24	-10~24	-10~24	

Measurement conditions:

- Cooling capacity is based on: indoor temp. 27°C DB, 19°C WB; outdoor temp. 35°C DB, piping length 5 m.
- Sound levels are based on temperature conditions 1. above with 5m piping length. These are anechoic conversion values. These values are normally somewhat higher during actual operation as a result of ambient conditions.

Cooling and heating capacities above are rounded off to first decimal. 1TR (Ton of Refrigeration) = ~3.517 kilowatt.

*Star Rating mentioned above is as per norms defined by Bureau of Energy Efficiency, Ministry of Power, Government of India.

**Value given in Inch.

As per Continuing Policy of Product Innovation at Daikin, The Design, Technical Specifications, Features, Look may change without prior notice.

SPECIFICATIONS 3 Star Super Summer Series

Model name	Indoor unit (IDU)		FTKT35UV16W	FTKT50UV16V	FTKT60UV16U
	Outdoor unit (ODU)		RKT35UV16W	RKT50UV16V	RKT60UV16U
Star Rating*			3 Star	3 Star	3 Star
Rated Power Supply	Phase/Frequency/Voltage		1 ϕ /50Hz/230V	1 ϕ /50Hz/230V	1 ϕ /50Hz/230V
Power Supply Intake			Outdoor unit	Outdoor unit	Outdoor unit
Rated Cooling Capacity Full/Half (min.~max.)	kW		3.52/1.76 (1.07~3.7)	5.28/2.64 (1.75~5.4)	6.2/3.1 (1.75~6.5)
	Btu/h		12000/6000 (3650~12620)	18000/9000 (5970~18420)	21150/10575 (5970~22180)
Cooling Capacity @ 43 Deg °C	%		100%	100%	100%
Rated Power Consumption Full/Half (min.~max.)	W		1145/335 (210~1200)	1602/535 (370~1650)	1920/619 (350~2100)
Rated Annual Power Consumption	kWh		620.32	930.42	1094.44
Rated ISEER	Wh/Wh		4.39	4.39	4.39
Voltage Range (Stabilizer Inside)	V		130~285	130~285	130~285
Operating Current	A		5.08	7.11	8.52
Indoor unit (IDU)					
Panel Colour			White	White	White
IDU Dimension (HxWxD)	mm		298x800x229	298x885x229	298x885x229
Package Dimension (HxWxD)			375x895x325	375x980x325	375x980x325
IDU Net Weight (Gross Weight)	kg		9.5 (12.5)	10.5 (13.5)	11 (14)
Airflow Rate	Feet ³ /min (cfm)		420	572	593
	m ³ /min (cmm)		11.9	16.2	16.8
Moisture Removal	l/hr (Litres/Hour)		1	1.8	2.6
Operation Sound H/MH/M/ML/L/SL	dBA		42/40/37/34/30/27	46/43/41/38/35/32	48/46/43/41/38/32
Outdoor unit (ODU)					
ODU Dimension (HxWxD)	mm		550x675x284	595x845x300	595x845x300
Package Dimension (HxWxD)			620x825x400	680x1035x410	680x1035x410
ODU Net Weight (Gross Weight)	kg		21.5 (27.5)	30 (37)	33.5 (40)
Compressor Type			Swing Compressor	Swing Compressor	Swing Compressor
Refrigerant			R-32	R-32	R-32
Breaker Size	A		15	20	20
Piping Length	Charge-Less		10	10	10
	Max. Length		15	20	25
	Max. Height		12	16	20
Piping Connection	Gas / Liquid		mm (Inch)	Φ9.5/φ6.4 (3/8"/1/4")	Φ12.7/φ6.4 (1/2"/1/4")
Operating Ambient Temperature Range	Cooling (Min~Max)		°C DB	20~54	20~54

SPECIFICATIONS 3 Star Standard+ Series

Model name	Indoor unit (IDU)		FTKL35UV16W	FTKL50UV16V/U/V3
	Outdoor unit (ODU)		RKL35UV16W	RKL50UV16V/U/V3
Star Rating*			3 Star	3 Star
Rated Power Supply	Phase/Frequency/Voltage		1 ϕ /50Hz/230V	1 ϕ /50Hz/230V
Power Supply Intake			Outdoor unit	Outdoor unit
Rated Cooling Capacity Full/Half (min.~max.)	kW		3.52/1.76 (1.07~3.7)	5.0/2.5 (1.9~5.2)
	Btu/h		12000/6000 (3650~12620)	17100/8550 (6480~17740)
Cooling Capacity @ 43 Deg °C	%		100%	100%
Rated Power Consumption Full/Half (min.~max.)	W		1200/383 (210~1200)	1670/554 (425~1840)
Rated Annual Power Consumption	kWh		680.40	966.47
Rated ISEER	Wh/Wh		4.00	4.00
Voltage Range (Stabilizer Inside)	V		130~285	130~285
Operating Current	A		5.43	7.64
Indoor unit (IDU)				
Panel Colour			White	White
IDU Dimension (HxWxD)	mm		298x800x229	298x885x229
Package Dimension (HxWxD)			375x895x325	375x980x325
IDU Net Weight (Gross Weight)	kg		9.5 (12.5)	10.5 (13.5)
Airflow Rate	Feet ³ /min (cfm)		420	572
	m ³ /min (cmm)		11.9	16.2
Moisture Removal	l/hr (Litres/Hour)		1	1.6
Operation Sound H/MH/M/ML/L/SL	dBA		42/40/37/34/30/27	46/43/41/38/35/32
Outdoor unit (ODU)				
ODU Dimension (HxWxD)	mm		550x675x284	595x845x300
Package Dimension (HxWxD)			620x825x400	680x1035x410
ODU Net Weight (Gross Weight)	kg		21.5 (27.5)	28 (35)
Compressor Type			Swing Compressor	Swing Compressor*
Refrigerant			R-32	R-32
Breaker Size	A		15	20
Piping Length	Charge-Less		10	10
	Max. Length		15	20
	Max. Height		12	10
Piping Connection	Gas / Liquid		mm (Inch)	Φ9.5/φ6.4 (3/8"/1/4")
Operating Ambient Temperature Range	Cooling (Min~Max)		°C DB	20~52

Measurement conditions:

1. Cooling capacity is based on: indoor temp. 27°C DB, 19°C WB; outdoor temp. 35°C DB, piping length 5 m.
2. Sound levels are based on temperature conditions 1. above with 5m piping length. These are anechoic conversion values. These values are normally somewhat higher during actual operation as a result of ambient conditions.

Cooling and heating capacities above are rounded off to first decimal. 1TR (Ton of Refrigeration) = ~3.517 kilowatt.

*Star Rating mentioned above is as per norms defined by Bureau of Energy Efficiency, Ministry of Power, Government of India.

*Value given in Inch.

*Swing Compressor feature may vary from model to model.

As per Continuing Policy of Product Innovation at Daikin, The Design, Technical Specifications, Features, Look may change without prior notice.

SPECIFICATIONS 3 Star Standard+ Series

Model name	Indoor unit (IDU)		FTKL60UV16U	FTKL71UV16T
	Outdoor unit (ODU)		RKL60UV16U	RKL71UV16T
Star Rating*			3 Star	3 Star
Rated Power Supply	Phase/Frequency/Voltage		1φ/50Hz/230V	1φ/50Hz/230V
Power Supply Intake			Outdoor unit	Outdoor unit
Rated Cooling Capacity Full/Half (min.~max.)	kW		6.0/3.0 (1.75~6.5)	7.1/3.55 (2.1~7.5)
	Btu/h		20470/10235 (5970~22180)	24200/12100 (7170~25590)
Cooling Capacity @ 43 Deg °C	%		100%	100%
Rated Power Consumption Full/Half (min.~max.)	W		1950/683(350~2100)	2410/776 (400~2600)
Rated Annual Power Consumption	kWh		1161.78	1372.85
Rated ISEER	Wh/Wh		4.00	4.00
Voltage Range (Stabilizer Inside)	V		130~285	130~265
Operating Current	A		8.65	10.6
Indoor unit (IDU)				
Panel Colour			White	White
IDU Dimension (HxWxD)	mm		298x885x229	310x1100x239
Package Dimension (HxWxD)			375x980x325	330x1230x385
IDU Net Weight (Gross Weight)	kg		11 (14)	12.5 (16.5)
	Feet ³ /min (cfm)		593	635
Airflow Rate	m ³ /min (cmm)		16.8	18
	l/hr (Litres/Hour)		2.3	3.3
Moisture Removal	dBa		48/46/43/41/38/32	49/46/44/41/39/32
Outdoor unit (ODU)				
ODU Dimension (HxWxD)	mm		595x845x300	595x845x300
Package Dimension (HxWxD)			680x1035x410	680x1035x410
ODU Net Weight (Gross Weight)	kg		33.5 (40)	36.5 (42)
Compressor Type			Swing Compressor	Swing Compressor
Refrigerant			R-32	R-32
Breaker Size	A		20	20
Piping Length	Charge-Less	m	10	10
	Max. Length		25	30
	Max. Height		20	20
Piping Connection	Gas / Liquid	mm (Inch)	Φ12.7/φ6.4 (1/2"/1/4")	Φ15.9/φ6.4 (5/8"/1/4")
Operating Ambient Temperature Range	Cooling (Min~Max)	°C DB	20~52	20~52

Model name	Indoor unit (IDU)		DTKL35UV16W	DTKL50UV16V/U/V3	DTKL60UV16U
	Outdoor unit (ODU)		RKL35UV16W	RKL50UV16V/U/V3	RKL60UV16U
Star Rating*			3 Star	3 Star	3 Star
Rated Power Supply	Phase/Frequency/Voltage		1φ/50Hz/230V	1φ/50Hz/230V	1φ/50Hz/230V
Power Supply Intake			Outdoor unit	Outdoor unit	Outdoor unit
Rated Cooling Capacity Full/Half (min.~max.)	kW		3.52/1.76 (1.07~3.7)	5.0/2.5 (1.9~5.2)	6.0/3.0 (1.75~6.5)
	Btu/h		12000/6000 (3650~12620)	17100/8550 (6480~17740)	20470/10235(5970~22180)
Cooling Capacity @ 43 Deg °C	%		100%	100%	100%
Rated Power Consumption Full/Half (min.~max.)	W		1200/383 (210~1200)	1670/554 (425~1840)	1950/683(350~2100)
Rated Annual Power Consumption	kWh		680.40	966.47	1161.78
Rated ISEER	Wh/Wh		4.00	4.00	4.00
Voltage Range (Stabilizer Inside)	V		130~285	130~285	130~285
Operating Current	A		5.43	7.64	8.65
Indoor unit (IDU)					
Panel Colour			White	White	White
IDU Dimension (HxWxD)	mm		298x800x229	298x885x229	298x885x229
Package Dimension (HxWxD)			375x895x325	375x980x325	375x980x325
IDU Net Weight (Gross Weight)	kg		9.5 (12.5)	10.5 (13.5)	11 (14)
	Feet ³ /min (cfm)		420	572	593
Airflow Rate	m ³ /min (cmm)		11.9	16.2	16.8
	l/hr (Litres/Hour)		1	1.6	2.3
Moisture Removal	dBa		42/40/37/34/30/27	46/43/41/38/35/32	48/46/43/41/38/32
Outdoor unit (ODU)					
ODU Dimension (HxWxD)	mm		550x675x284	595x845x300	595x845x300
Package Dimension (HxWxD)			620x825x400	680x1035x410	680x1035x410
ODU Net Weight (Gross Weight)	kg		21.5 (27.5)	28 (35)	33.5 (40)
Compressor Type			Swing Compressor	Swing Compressor*	Swing Compressor
Refrigerant			R-32	R-32	R-32
Breaker Size	A		15	20	20
Piping Length	Charge-Less	m	10	10	10
	Max. Length		15	20	25
	Max. Height		12	10	20
Piping Connection	Gas / Liquid	mm (Inch)	Φ9.5/φ6.4 (3/8"/1/4")	Φ12.7/φ6.4 (1/2"/1/4")	Φ12.7/φ6.4 (1/2"/1/4")
Operating Ambient Temperature Range	Cooling (Min~Max)	°C DB	20~52	20~52	20~52

Measurement conditions:

- Cooling capacity is based on: indoor temp. 27°C DB, 19°C WB; outdoor temp. 35°C DB, piping length 5 m.
- Sound levels are based on temperature conditions 1, above with 5m piping length. These are anechoic conversion values. These values are normally somewhat higher during actual operation as a result of ambient conditions.

Cooling and heating capacities above are rounded off to first decimal. 1TR (Ton of Refrigeration) = -3.517 kilowatt.

*Star Rating mentioned above is as per norms defined by Bureau of Energy Efficiency, Ministry of Power, Government of India.

*Value given in Inch.

*Swing Compressor feature may vary from model to model.

As per Continuing Policy of Product Innovation at Daikin, The Design, Technical Specifications, Features, Look may change without prior notice.

SPECIFICATIONS 3 Star Standard+ Series

Model name	Indoor unit (IDU)		ATKL35UV16W	ATKL50UV16V/U/V3	ATKL60UV16U
	Outdoor unit (ODU)		RKL35UV16W	RKL50UV16V/U/V3	RKL60UV16U
Star Rating*			3 Star	3 Star	3 Star
Rated Power Supply	Phase/Frequency/Voltage		1 ϕ /50Hz/230V	1 ϕ /50Hz/230V	1 ϕ /50Hz/230V
Power Supply Intake			Outdoor unit	Outdoor unit	Outdoor unit
Rated Cooling Capacity Full/Half (min.~max.)	kW		3.52/1.76 (1.07~3.7)	5.0/2.5 (1.9~5.2)	6.0/3.0 (1.75~6.5)
	Btu/h		12000/6000 (3650~12620)	17100/8550 (6480~17740)	20470/10235(5970~22180)
Cooling Capacity @ 43 Deg °C	%		100%	100%	100%
Rated Power Consumption Full/Half (min.~max.)	W		1200/383 (210~1200)	1670/554 (425~1840)	1950/683(350~2100)
Rated Annual Power Consumption	kWh		680.40	966.47	1161.78
Rated ISEER	Wh/Wh		4.00	4.00	4.00
Voltage Range (Stabilizer Inside)	V		130~285	130~285	130~285
Operating Current	A		5.43	7.64	8.65
Indoor unit (IDU)					
Panel Colour			White	White	White
IDU Dimension (HxWxD)	mm		298x821x235	298x906x235	298x906x235
Package Dimension (HxWxD)			375x915x330	375x1000x330	375x1000x330
IDU Net Weight (Gross Weight)	kg		9.5 (12.5)	10.5 (13.5)	11 (14)
Airflow Rate	Feet ³ /min (cfm)		420	572	593
	m ³ /min (cmm)		11.9	16.2	16.8
Moisture Removal	l/hr (Litres/Hour)		1	1.6	2.3
Operation Sound H/MH/M/ML/L/SL	dBA		42/40/37/34/30/27	46/43/41/38/35/32	48/46/43/41/38/32
Outdoor unit (ODU)					
ODU Dimension (HxWxD)	mm		550x675x284	595x845x300	595x845x300
Package Dimension (HxWxD)			620x825x400	680x1035x410	680x1035x410
ODU Net Weight (Gross Weight)	kg		21.5 (27.5)	28 (35)	33.5 (40)
Compressor Type			Swing Compressor	Swing Compressor [#]	Swing Compressor
Refrigerant			R-32	R-32	R-32
Breaker Size	A		15	20	20
Piping Length	Charge-Less		10	10	10
	Max. Length		15	20	25
	Max. Height		12	10	20
Piping Connection	Gas / Liquid		mm (Inch)	Φ9.5/φ6.4 (3/8"/1/4")	Φ12.7/φ6.4 (1/2"/1/4")
Operating Ambient Temperature Range	Cooling (Min~Max)		°C DB	20~52	20~52

SPECIFICATIONS 3 Star Standard+ Series

Model name	Indoor unit (IDU)		MTKL35UV16W	MTKL50UV16V/U/V3
	Outdoor unit (ODU)		RKL35UV16W	RKL50UV16V/U/V3
Star Rating*			3 Star	3 Star
Rated Power Supply	Phase/Frequency/Voltage		1 ϕ /50Hz/230V	1 ϕ /50Hz/230V
Power Supply Intake			Outdoor unit	Outdoor unit
Rated Cooling Capacity Full/Half (min.~max.)	kW		3.52/1.76 (1.07~3.7)	5.0/2.5 (1.9~5.2)
	Btu/h		12000/6000 (3650~12620)	17100/8550 (6480~17740)
Cooling Capacity @ 43 Deg °C	%		100%	100%
Rated Power Consumption Full/Half (min.~max.)	W		1200/383 (210~1200)	1670/554 (425~1840)
Rated Annual Power Consumption	kWh		680.40	966.47
Rated ISEER	Wh/Wh		4.00	4.00
Voltage Range (Stabilizer Inside)	V		130~265	130~265
Operating Current	A		5.43	7.64
Indoor unit (IDU)				
Panel Colour			White	White
IDU Dimension (HxWxD)	mm		298x800x229	298x885x229
Package Dimension (HxWxD)			375x895x325	375x980x325
IDU Net Weight (Gross Weight)	kg		9.5 (12.5)	10.5 (13.5)
Airflow Rate	Feet ³ /min (cfm)		420	572
	m ³ /min (cmm)		11.9	16.2
Moisture Removal	l/hr (Litres/Hour)		1	1.6
Operation Sound H/MH/M/ML/L/SL	dBA		41/39/36/33/29/26	45/42/40/38/35/32
Outdoor unit (ODU)				
ODU Dimension (HxWxD)	mm		550x675x284	595x845x300
Package Dimension (HxWxD)			620x825x400	680x1035x410
ODU Net Weight (Gross Weight)	kg		21.5 (27)	28 (33)
Compressor Type			Swing Compressor	Swing Compressor [#]
Refrigerant			R-32	R-32
Breaker Size	A		15	20
Piping Length	Charge-Less		10	10
	Max. Length		15	20
	Max. Height		12	10
Piping Connection	Gas / Liquid		mm (Inch)	Φ9.5/φ6.4 (3/8"/1/4")
Operating Ambient Temperature Range	Cooling (Min~Max)		°C DB	20~52

Measurement conditions:

- Cooling capacity is based on: indoor temp. 27°C DB, 19°C WB; outdoor temp. 35°C DB, piping length 5 m.
- Sound levels are based on temperature conditions 1. above with 5m piping length. These are anechoic conversion values. These values are normally somewhat higher during actual operation as a result of ambient conditions.

Cooling and heating capacities above are rounded off to first decimal. 1TR (Ton of Refrigeration) = ~3.517 kilowatt.

*Star Rating mentioned above is as per norms defined by Bureau of Energy Efficiency, Ministry of Power, Government of India.

[#]Value given in Inch.

[#]Swing Compressor feature may vary from model to model.

As per Continuing Policy of Product Innovation at Daikin, The Design, Technical Specifications, Features, Look may change without prior notice.

NON-INVERTER SPLIT AIRCONDITIONERS

SPECIFICATIONS 3 Star Standard Series

Model name	Indoor unit (IDU)		FTL28UV16W1	FTL35UV16W1/3	FTL50UV16U3/V3
	Outdoor unit (ODU)		RL28UV16W1	RL35UV16W1/3	RL50UV16U3/V3
Star Rating*			3 Star	3 Star	3 Star
Rated Power Supply	Phase/Frequency/Voltage		1 ϕ /50Hz/230V	1 ϕ /50Hz/230V	1 ϕ /50Hz/230V
Power Supply Intake			Outdoor unit	Outdoor unit	Outdoor unit
Rated Cooling Capacity	kW		2.8	3.35	5.05
	Btu/h		9550	11430	17230
Cooling Capacity @ 43 Deg °C	%		100%	100%	100%
Rated Power Consumption	W		709	848	1278
Rated Annual Power Consumption	kWh		548.84	656.44	989.31
Rated ISEER	Wh/Wh		3.95	3.95	3.95
Voltage Range (Stabilizer Free)	V		Yes	Yes	Yes
Operating Current	A		3.18	3.80	5.73
Indoor unit (IDU)					
Panel Colour			White	White	White
IDU Dimension (HxWxD)	mm		298x800x229	298x800x229	298x885x229
Package Dimension (HxWxD)	mm		375x895x325	375x895x325	375x980x325
IDU Net Weight (Gross Weight)	kg		9.5 (12)	9.5 (12)	11 (14)
Airflow Rate	Feet ³ /min (cfm)		473	473	586
	m ³ /min (cmm)		13.4	13.4	16.6
Moisture Removal	l/hr (Litres/Hour)		0.5	1	1.6
Operation Sound H/M/L	dBA		43/37/32	43/37/32	48/44/38
Outdoor unit (ODU)					
ODU Dimension (HxWxD)	mm		550x675x284	550x675x284	595x845x300
Package Dimension (HxWxD)	mm		620x825x400	620x825x400	680x1035x410
ODU Net Weight (Gross Weight)	kg		26.5(32.5)	28.5 (34)	40.5 (47.5)
Compressor Type			Rotary Compressor	Rotary Compressor	Rotary Compressor
Refrigerant			R-32	R-32	R-32
Breaker Size	A		15	15	15
Piping Length	Charge-Less		10	10	10
	Max. Length		20	20	20
	Max. Height		15	15	10
Piping Connection	Gas / Liquid	mm (Inch)	Ø9.5/Ø6.4(3/8"/1/4")	Ø9.5/Ø6.4(3/8"/1/4")	Ø12.7/Ø6.4(1/2"/1/4")
Operating Ambient Temperature Range	Cooling (Min-Max)	°C DB	19.4-50	19.4-50	19.4-50

SPECIFICATIONS Standard Series

Model name	Indoor unit (IDU)		FTE60UV16U2
	Outdoor unit (ODU)		RE60UV16U2
Star Rating*			1 Star
Rated Power Supply	Phase/Frequency/Voltage		1 ϕ /50Hz/230V
Power Supply Intake			Outdoor unit
Rated Cooling Capacity	kW		6.4
	Btu/h		21840
Cooling Capacity @ 43 Deg °C	%		100%
Rated Power Consumption	W		1855
Rated Annual Power Consumption	kWh		1435.97
Rated ISEER	Wh/Wh		3.45
Voltage Range (Stabilizer Free)	V		Yes
Operating Current	A		8.31
Indoor unit (IDU)			
Panel Colour			White
IDU Dimension (HxWxD)	mm		298x885x229
Package Dimension (HxWxD)	mm		375x980x325
IDU Net Weight (Gross Weight)	kg		11 (14)
Airflow Rate	Feet ³ /min (cfm)		586
	m ³ /min (cmm)		16.6
Moisture Removal	l/hr (Litres/Hour)		2.6
Operation Sound H/M/L	dBA		49/45/39
Outdoor unit (ODU)			
ODU Dimension (HxWxD)	mm		595x845x300
Package Dimension (HxWxD)	mm		680x1035x410
ODU Net Weight (Gross Weight)	kg		43.5 (50)
Compressor Type			Rotary Compressor
Refrigerant			R-32
Breaker Size	A		20
Piping Length	Charge-Less		10
	Max. Length		20
	Max. Height		10
Piping Connection	Gas / Liquid	mm (Inch)	Ø12.7/Ø6.4 (1/2"/1/4")
Operating Ambient Temperature Range	Cooling (Min-Max)	°C DB	19.4-50

Measurement conditions:

1. Cooling capacity is based on: indoor temp. 27°C DB, 19°C WB; outdoor temp. 35°C DB, piping length 5 m.

2. Sound levels are based on temperature conditions 1. above with 5m piping length. These are anechoic conversion values. These values are normally somewhat higher during actual operation as a result of ambient conditions.

Cooling and heating capacities above are rounded off to first decimal. 1TR (Ton of Refrigeration) = 3.517 kilowatt.

*Star Rating mentioned above is as per norms defined by Bureau of Energy Efficiency, Ministry of Power, Government of India.

[∞]Value given in Inch.

As per Continuing Policy of Product Innovation at Daikin, The Design, Technical Specifications, Features, Look may change without prior notice.

UNIT OPTIONS

Optional Parts Name	Part No.	5 Star Inverter Series					
		JTKJ	FTKR	FTKF	FTKZ	FTKM	MTKM
Air purifying filter (PM 1.0) (for Streamer unit) 1 no.	KAF100A507	Yes	No	No	No	No	No
Air purifying filter (PM 2.5) 1 set	KAF250A502	Optional	Optional	Optional*1	Optional	Optional	Optional
Titanium apatite deodorizing air purifying filter 1 set	KAF970A45	Optional	Optional	Optional	Optional	Optional	Optional
Ag-ion filter 1 set	KAF057A41	Optional	Optional	Optional	Optional	Optional	Optional
Antimicrobial filter 1set	KAF500A504	Optional	Optional	Optional	Optional	Optional	Optional
Wi-Fi Kit	With 3D air flow	BRP601AR1V1	No	In built	No	No	No
	W/O 3D air flow	BRP601AR2V1	No	In built	No	No	No
	Heat pump	BRP601AR3V1	No	No	No	No	No

*1 For FTKF50 models filter will be inbuilt with the frame.

Optional Parts Name	Part No.	3 Star Inverter Series						
		FTKN	FTHT	FTKT	FTKL	DTKL	ATKL	MTKL
Air purifying filter (PM 1.0) (for Streamer unit) 1 no.	KAF100A507	Optional	No	No	No	No	No	No
Air purifying filter (PM 2.5) 1 set	KAF250A502	Optional	Optional	Optional	Optional*1	Optional	Optional	Optional
Titanium apatite deodorizing air purifying filter 1 set	KAF970A45	Optional	Optional	Optional	Optional	Optional	Optional	Optional
Ag-ion filter 1 set	KAF057A41	Optional	Optional	Optional	Optional	Optional	Optional	Optional
Antimicrobial filter 1set	KAF500A504	Optional	Optional	Optional	Optional	Optional	Optional	Optional

*1 FTKL71 models filter will be inbuilt with the frame

Optional Parts Name	Part No.	Non Inverter Series	
		FTL	FTE
Air purifying filter (PM 1.0) (for Streamer unit) 1 no.	KAF100A507	No	No
Air purifying filter (PM 2.5) 1 set	KAF250A502	Optional	Optional
Titanium apatite deodorizing air purifying filter 1 set	KAF970A45	Optional	Optional
Ag-ion filter 1 set	KAF057A41	Optional	Optional
Antimicrobial filter 1set	KAF500A504	Optional	Optional

Note: With optional Wi-Fi kit Air Conditioner cloud connectivity subscription for one year comes along with the product. After one year, the subscription needs to be renewed by the customer.

BEE Star Rating Table (Split Type Air Conditioners)

From 1st July 2022 to 31st December 2024

Indian Seasonal Energy Efficiency Ratio (kWh/kWh)		
Star Level	Minimum	Maximum
1 Star	3.3	3.49
2 Star	3.5	3.79
3 Star	3.8	4.39
4 Star	4.4	4.99
5 Star	5	—



FEATURES LIST

Function		JTKJ35/50/60	FTKR35/50/60	FTKF35	FTKF50	FTKZ50	FTKM 35/50/60	MTKM 35/50/60	FTKN35/50
		RKJ35/50/60	RKR35/50/60	RKF35	RKF50	RKZ50	RKM 35/50/60	RKM 35/50/60	RKL35/50
Technology	Swing compressor (Patented)	•	•	•	•	—	•	•	•
	Variable speed inverter AC (Automatic)	•	•	•	•	•	•	•	•
	Rotary compressor	—	—	—	—	Twin Rotary	—	—	—
	Dew clean technology	•	•	—	—	—	•	•	•
	Reluctance DC motor	•	•	•	•	•	•	•	•
Comfortable Airflow	New comfort airflow mode (COANDA)	•	•	•	•	—	•	•	•
	Power-airflow dual flaps	•	•	•	—	•	•	•	•
	Wide-angle louvers	•	•	•	•	•	•	•	•
	Vertical auto-swing (2-way air swing) (up and down)	•	•	•	•	•	•	•	•
	Horizontal auto-swing (4-way air swing) (left and right)	•	•	•	•	•	•	•	•
	3-D airflow	•	•	•	•	•	•	•	•
Comfort Control	Indoor unit quiet operation	•	•	•	•	—	•	•	•
	Outdoor unit quiet operation	•	—	—	—	—	—	—	—
	Intelligent eye	•	—	—	—	—	—	—	—
	Automatic operation (heating and cooling)	—	—	—	—	—	—	—	—
Lifestyle Convenience	Auto fan speed	•	•	•	•	•	•	•	•
	ECONO mode	•	•	•	•	•	•	•	•
	Dry mode function	•	•	•	•	•	•	•	•
	POWER CHILL operation	•	•	•	•	Yes (Turbo) *1	•	•	•
	Indoor unit ON/OFF switch	•	•	•	•	•	•	•	•
Cleanliness (Air Purification Filters)	Number of adjustable fan speed	5	5	5	5	5	5	5	5
	Patented Streamer Discharge air purifier	•	—	—	—	—	—	—	•
	Smell proof operation	Yes *1	Yes *1	Yes *1	Yes *1	—	Yes *1	Yes *1	Yes *1
	Titanium apatite deodorizing air purifying filter (TAD)	Optional	Optional	Optional	Optional	Optional	Optional	Optional	Optional
	Ag ion filter (Ag ion)	Optional	Optional	Optional	Optional	Optional	Optional	Optional	Optional
	Air purifying filter (PM 2.5)	Optional	•	•	•	•	•	•	•
	Air purifying filter (PM 1.0)	•	—	—	—	—	—	—	—
	Anti microbial filter	Optional	Optional	Optional	Optional	Optional	Optional	Optional	Optional
Controls	Wipe-clean flat panel (washable)	•	•	•	•	•	•	•	•
	Pre filter with Anti-Bacterial coating	•	•	•	•	•	•	•	—
	Power consumption display at Indoor unit	•	•	—	—	—	•	•	•
	Set temperature display at Indoor unit	•	•	—	—	•	•	•	•
	Room temperature display at indoor unit	•	•	—	—	•	•	•	•
	Display off function	•	•	—	—	•	•	•	•
	Automatic error code display	•	•	—	—	—	•	•	•
	Display brightness control	•	•	—	—	—	•	•	•
	IDU LED brightness control	•	•	—	—	—	•	•	•
	Backlit remote controller	•	•	•	•	—	•	•	•
Timers	Luminescent remote button	•	•	•	•	—	•	•	•
	Remote LCD backlit OFF	•	—	—	—	—	—	—	—
	Child lock	•	•	•	•	•	•	•	•
	24-Hr ON/OFF timer	•	—	—	—	•	•	•	—
	Count up-down ON/OFF timer	•	•	•	•	•	•	•	•
Worry Free(Smart Control)	Good sleep off timer	•	•	•	•	•	•	•	•
	Auto-restart (after power failure)	•	•	•	•	•	•	•	•
	Stabilizer inside	•	•	•	•	•	•	•	•
	Anti corrosion treatment on indoor and outdoor heat exchanger copper tubes (BTA oil)	•	•	•	•	•	•	•	•
	Anti-corrosion treatment on outdoor and indoor heat exchanger fin (hydrophilic)	•	•	•	•	•	•	•	•
	Zinc + powder coating on outdoor internal & external casing parts	•	•	•	•	•	•	•	•
	Self-diagnosis	•	•	•	•	•	•	•	•
	i-Feel	—	—	—	—	—	—	—	—
	Voice control (works with amazon alexa & google home)	—	•	—	—	—	—	—	—
	Mobile app control (Wi Fi)	—	•	—	—	—	—	—	—
Smart phone connection	—	•	—	—	—	—	—	—	
Installation	Installation kit (3 meter)	•	•	•	•	•	•	•	•

Note:
 *1 ON during fan auto setting (OFF during POWER CHILL Operation)
 Yes-Feature Available
 *Yes-Feature is available in selected models

FEATURES LIST

Function		FTHT35/ 50/60	FTKT35/ 50/60	FTKL35 50**/60	FTKL71	DTKL35/ 50**/60	ATKL35/ 50**/60	MTKL35/50**
		RHT35/ 50/60	RKT35/ 50/60	RKL35/ 50**/60	RKL71	RKL35/ 50**/60	RKL35/ 50**/60	RKL35/50**
Technology	Swing compressor (Patented)	•	•	•	•	•	•	•
	Variable speed inverter AC (Automatic)	•	•	•	•	•	•	•
	Rotary compressor	—	—	—	—	—	—	—
	Dew clean technology	•	•	•	—	•	•	•
Comfortable Airflow	Reluctance DC motor	•	•	•	•	•	•	•
	New comfort airflow mode (COANDA)	•	•	•	•	•	•	•
	Power-airflow dual flaps	•	•	•	—	•	•	•
	Wide-angle louvers	•	•	•	•	•	•	•
	Vertical auto-swing (2-way air swing) (up and down)	•	•	•	•	•	•	•
	Horizontal auto-swing (4-way air swing) (left and right)	•	•	•	•	•	•	•
	3-D airflow	•	•	•	•	•	•	•
Comfort Control	Indoor unit quiet operation	•	•	•	•	•	•	•
	Outdoor unit quiet operation	—	—	—	—	—	—	—
	Intelligent eye	—	—	—	—	—	—	—
	Automatic operation (heating and cooling)	•	—	—	—	—	—	—
Lifestyle Convenience	Auto fan speed	•	•	•	•	•	•	•
	ECONO mode	•	•	•	•	•	•	•
	Dry mode function	•	•	•	•	•	•	•
	POWER CHILL operation	—	•	•	•	•	•	•
	Indoor unit ON/OFF switch	•	•	•	•	•	•	•
Cleanliness (Air Purification Filters)	Number of adjustable fan speed	5	5	5	5	5	5	5
	Patented Streamer Discharge air purifier	—	—	—	—	—	—	—
	Smell proof operation	Yes *1	Yes *1	Yes *1	Yes *1	Yes *1	Yes *1	Yes *1
	Titanium apatite deodorizing air purifying filter (TAD)	Optional	Optional	Optional	Optional	Optional	Yes	Optional
	Ag ion filter (Ag ion)	Optional	Optional	Optional	Optional	Optional	Optional	Optional
	Air purifying filter (PM 2.5)	•	•	•	•	Optional	Optional	•
	Air purifying filter (PM 1.0)	—	—	—	—	—	—	—
	Anti microbial filter	Optional	Optional	Optional	Optional	•	Optional	Optional
Controls	Wipe-clean flat panel (washable)	•	•	•	•	•	•	•
	Power consumption display at Indoor unit	—	—	•	—	•	•	•
	Set temperature display at Indoor unit	•	•	•	—	•	•	•
	Room temperature display at indoor unit	•	•	•	—	•	•	•
	Display off function	•	•	•	—	•	•	•
	Automatic error code display	•	•	•	—	•	•	•
	Display brightness control	•	•	•	—	•	•	•
	IDU LED brightness control	•	•	•	—	•	•	•
	Backlit remote controller	•	•	•	•	•	•	•
	Luminescent remote button	•	•	•	•	•	•	•
	Remote LCD backlit OFF	•	•	—	—	—	—	—
	Child lock	—	—	•	•	•	•	•
Timers	24-Hr ON/OFF timer	•	•	—	—	—	—	—
	Count up-down ON/OFF timer	—	—	•	•	•	•	•
	Good sleep off timer	•	•	•	•	•	•	•
	Auto-restart (after power failure)	•	•	•	•	•	•	•
Worry Free(Smart Control)	Stabilizer inside	•	•	•	•	•	•	•
	Anti corrosion treatment on indoor and outdoor heat exchanger copper tubes (BTA oil)	•	•	•	•	•	•	•
	Anti-corrosion treatment on outdoor and indoor heat exchanger fin (hydrophilic)	•	•	•	•	•	•	•
	Zinc + powder coating on outdoor internal & external casing parts	•	•	•	•	•	•	•
	Self-diagnosis	•	•	•	•	•	•	•
	Voice control (works with amazon alexa & google home)	—	—	—	—	—	—	—
	Mobile app control (Wi Fi)	—	—	—	—	—	—	—
	Smart phone connection	—	—	—	—	—	—	—
Installation kit (3 meter)	•	•	•	•	•	•	•	

Note:
 *1 ON during fan auto setting (OFF during POWER CHILL Operation)
 Yes-Feature Available
 *Yes-Feature is available in selected models
 **Swing Compressor feature may vary from model to model.

FEATURES LIST

Function		FTL28/35/50	FTE60
		RL28/35/50	RE60
Technology	Rotary compressor	•	•
	Indoor unit DC motor	•	•
	Outdoor unit AC motor	•	•
Comfortable Airflow	New comfort airflow mode (COANDA)	•	•
	Power-airflow dual flaps	•	•
	Wide-angle louvers	•	•
	Vertical auto-swing (2-way swing) (up and down)	•	•
Comfort Control	Horizontal manual-swing (left and right)	•	•
	Auto fan speed	•	•
Lifestyle Convenience	ECONO mode	•	•
	Dry mode function	•	•
	POWER CHILL operation	•	•
	Indoor unit ON/OFF switch	•	•
Cleanliness (Air Purification Filters)	Number of adjustable fan speed	3	3
	Smell proof operation	Yes *1	Yes *1
	Titanium apatite deodorizing air purifying filter	Optional	Optional
	Ag ion filter	Optional	Optional
	Air purifying filter (PM 2.5)	•	Optional
	Anti microbial filter	Optional	Optional
Controls	Wipe-clean flat panel (washable)	•	•
	Backlit remote controller	•	•
	IDU LED brightness control	•	•
	Luminescent remote button	•	•
	Indoor temp. display on remote	•	•
Timers	Child lock	•	•
	Count up-down ON/OFF timer	•	•
	Good sleep off timer	•	•
Worry Free(Smart Control)	Auto-restart (after power failure)	•	•
	Stabilizer free	•	•
	Anti corrosion treatment on Indoor and outdoor heat exchanger tubes (BTA oil)	•	•
	Anti-corrosion treatment on outdoor and indoor heat exchanger fin	•	•
	Zinc + powder coating on outdoor external casing parts	•	•
	Self -diagnosis	•	•
	Installation kit (3 meter)	•	•

Note:
 *1 ON during fan auto setting (OFF during POWER CHILL Operation)
 Yes-Feature Available

Voice of Customer



Aashray Arora
Architect

"Daikin ACs circulate air at every corner and it not only cools the air but also cleanses the air which is good for my children. Daikin is a company with Tech in its DNA."

"It's high time we thought about climate change and we have to take care of mother nature. With Daikin green refrigerant technology AC, I decided to buy Daikin for my every room. Daikin really cares about the environment and helps in better cooling."

Ayushi Goyal
Documentary Producer

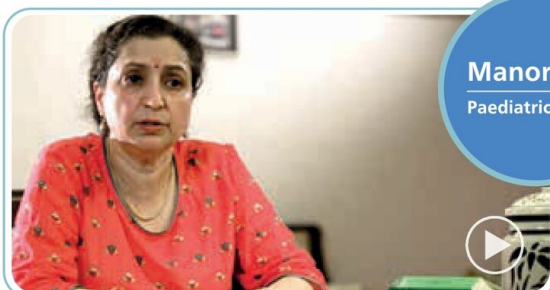


Sheeba
Home Maker

"Brand value matters to me. We have had Daikin ACs from the beginning. My family doesn't feel sick at home. Daikin has also been appreciated by the government for its innovative products. Daikin is undoubtedly the global leader."

"Daikin really has cool features and it's the best when it comes to technology. Swing compressor provides quiet and efficient operation throughout the day. Japanese technology makes sound and advanced technology products. Daikin has no match in this industry."

Abhinav Sharma
Engineer



Manorama
Paediatrician

"I was looking for an AC which provides clean and cool air; Daikin ACs with the Patented Streamer Discharge technology removes viruses and bacteria and provides a clean and protected environment inside the home. What better could a mother ask for, which Daikin provides?"

All Reasons to Bring Daikin Home

From innovations that set us apart to the inventions that change the lives of people, every Daikin product goes through rigorous testing to get our seal of approval. Every journey of a product from the assembly lines to the homes of people is a result of years of labour with an unwavering aim to improve the quality of life and make the planet better.

10 years warranty* on Compressor



Long term assurance

Provides tension-free comfort for a decade

*Applicable for inverter models only.

5 years warranty* on PCB (Printed Circuit Board)



Additional peace of mind

Gives extra assurance on the maintenance cost

*Applicable for inverter models only.

Dew Clean Technology



Cleans the heat exchanger automatically

Ensures hygiene & maintains clog-free heat exchanger for a better airflow

ISEER 6.2 Highest ISEER#



Higher efficiency

24% more energy efficiency as compared to 5 star AC with ISEER 5

*Applicable for FTKF35 model.

Triple Display (on Indoor unit)



Power Consumption, Set/Room Temperature & Auto Error code

Complete monitoring control in the hands of consumer

Patented Swing Inverter Compressor



Energy & money savings

Faster cooling with low operating sound

R-32 Green Refrigerant



Zero ozone depletion

Better cooling in high ambient temperatures

Stabilizer Inside Operation



No worry on voltage fluctuation

Regulate voltage across a wide range of fluctuation (130V~285V) Smooth operations during voltage fluctuations

Stabilizer Free Operation



Low cost maintenance

Wide operation range (160V~264 V)

Good Sleep Off Timer



Assured comfortable sleep

Set temperature increases by 0.5°C in 30 minutes interval

3D Airflow



Uniform cooling at every corner

It ensures steady air circulation to deliver even cooling and unmatched comfort

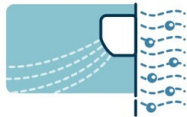
Coanda Airflow



Even airflow distribution to every corner of the room

Optimise flap position of the indoor unit for radiant cooling

 **Dry Function**



Automatic dehumidification

Enhanced comfort by reducing excessive humidity

 **Patented Streamer Discharge**



Plasma discharge decomposes viruses¹, bacteria¹ and harmful gases¹

Clean and healthy airflow

 **High Ambient Operation**



Operation at high ambient temperatures up to 56°C[#]

Comfortable cooling even at extreme conditions

*Applicable for FTKF series.

 **Anti-Corrosion Treatment**



Ensuring long life

With a special coating, it prevents the rusting of the copper coil

 **Mobile App Controlled**



Control from any corner of the world

Easy accessibility through mobile app

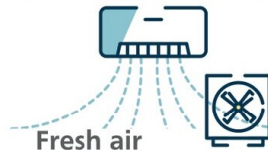
 **Voice Controlled Air-conditioning**



An AC that listens to your command

Voice controlled via Alexa/Google Home

 **Smell Proof Operation**



Fresh air supply all time

Indoor heat exchanger is cooled by fan

 **High Impact Polyesterine IDU Material**



Lasting fresh and new look, year after year

Best-in-class indoor unit casing material (HIPS)

 **Outdoor Power Supply**



Protection against fire accident

No overheating of main cable inside room

 **Intelligent Eye**



Adjusted cooling according to human presence

Energy saving when room is empty

 **Econo Mode**



Reduces energy consumption

Optimises cooling capacity

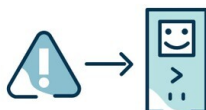
 **Power Chill Operation**



Fast cooling than normal mode

Immediate relief from hot temperature

 **Auto Error Code Display**



Auto error detection in the remote

AC issues identification no longer require technician expertise

 **Installation Kit**



2 times stronger XLPE insulation kit

Enhanced heat withstanding capacity of 120°C

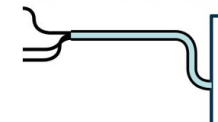
 **Advance Anti Corrosion**



Durable parts for all regions

(seashore, industrial area, etc.) All parts are coated with Advance anti corrosion material

 **Inner Grooved Pipe**



Oscillatory refrigerant motion

Better heat dissipation, strengthening AC's performance

1 - For details, visit- www.daikinindia.com/patented-streamer-discharge-technology. Features may vary model to model, refer feature details page.



DAIKIN AIRCONDITIONING INDIA PVT. LTD.

12th Floor, Building No. 9, Tower A, DLF Cyber City
DLF Phase III, Gurgaon 122002, Haryana, India
Tel: 0124-4555444, Fax: 0124-4555333

Sales & Service Offices

Ahmedabad Tel: 079-40013100	Cochin Tel: 0484-2808646	Kolkata Tel: 033-4060 8019/40659544	Pune Tel: 020-25560300
Bengaluru Tel: 080-25590452/54	Delhi NCR Tel: 011-43834400/4500	Lucknow Tel: 0522-4309858/59/60	Raipur Tel: 0771-4911225
Bhubaneswar Tel: 0674-2546476	Ghaziabad Tel: 0120-4205851	Ludhiana Tel: 0161-5077028/29/30	Ranchi Tel: 0763-5093703
Chandigarh Tel: 0172-5089862/64	Indore Tel: 0731-4005864	Mumbai Tel: 022-30926666	Secunderabad Tel: 040-49134283
Chennai Tel: 044-40807676	Jaipur Tel: 0141-2218903/04/05/06	Patna Tel: 0612-2582282	Vijaywada 0866-2952224/25/26

Customer Contact Centre:

SMS: <DAIKIN> to 92 101 88 999
Give missed call: to 92 101 88 999
Customer Support no.: 011-40319300 / 1860 180 3900
Email: customerservice@daikinindia.com
Visit us at: www.daikinindia.com

Follow us on:

 www.facebook.com/daikinindia
 www.twitter.com/daikinindia
 www.instagram.com/daikinindia
 in.company/daikin-airconditioning-india-pvt.-ltd
 www.youtube.com/user/DaikinACIndia

Disclaimer

As a continuing policy of product innovation at Daikin, the design and specifications are subject to change without prior notice. The visuals of the products in the brochure are representative only, actual products might differ from the ones shown.

'Products mentioned in this brochure comply with RoHS regulations as per E-waste (Management & Handling) Rules, 2011 and should not be mixed with general household waste at the end of their useful life.' For more details kindly visit our website www.daikinindia.com or contact our customer care centre at 011-40319300 / 1860 180 3900.

