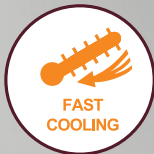




赤菱  
AKABISHI™

*Made In India.*  
*Made For You.*

**5** Year PCB **Total** Warranty\*  
**10** Year COMPRESSOR No Hidden Cost \*T&C apply.  
Customer Care No. 1800 102 2626



# AKABISHI SERIES BENEFITS



## Fast Cool

Fast Cooling mode starts immediately with the push of a button. According to preference, air direction can be changed freely.



## Auto Restart

The function permits automatic return to previous operation after a sudden power blackout.



## LED Back Light

Backlight button is pressed, the setting can be easily checked in the dark.

\*Currently available in Non Inverter Series



## PM 2.5 Filter

Effectively catches floating PM 2.5 particles to maintain clean air in the room. Electrostatic material removes PM 2.5 from the air and absorbs it when passing through the filter.



## Grooved Piping

High-performance grooved piping is used in heat exchangers to increase the heat exchange area.



## 24 Degree Default Setting



## DC Fan Motor

A highly efficient DC motor drives the fan of the indoor unit. Efficiency is much higher than an equivalent AC motor.



## Blue Fin

This AC has a blue epoxy coating on the evaporator fins of the indoor unit. This restricts the accumulation of condensed water and dust particles which significantly improves the cooling performance of this AC.



## 5 & 10 YEARS WARRANTY SCHEME

## AKABISHI INVERTER SERIES



## AKABISHI NON INVERTER SERIES

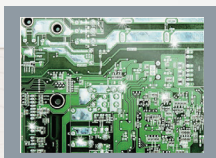


## DESIGN

To ease our customers' minds we invest great care when designing. So that they may use our products with the reassurance that comes through high-quality parts manufacturing and impeccable assembly.



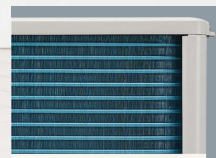
Ensure its reliable operation and preventing fire accident in case of short circuit in IDU.



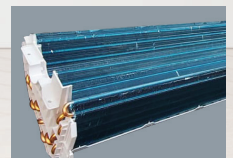
Special coating prevents any damages from humidity and insects.



Sheet metal ensure its reliable operation and preventing fire accident in case of short circuit in ODU.



A special coating is applied to the ODU heat exchanger to increase corrosion toughness.



A special coating is applied to the IDU heat exchanger to increase corrosion toughness.

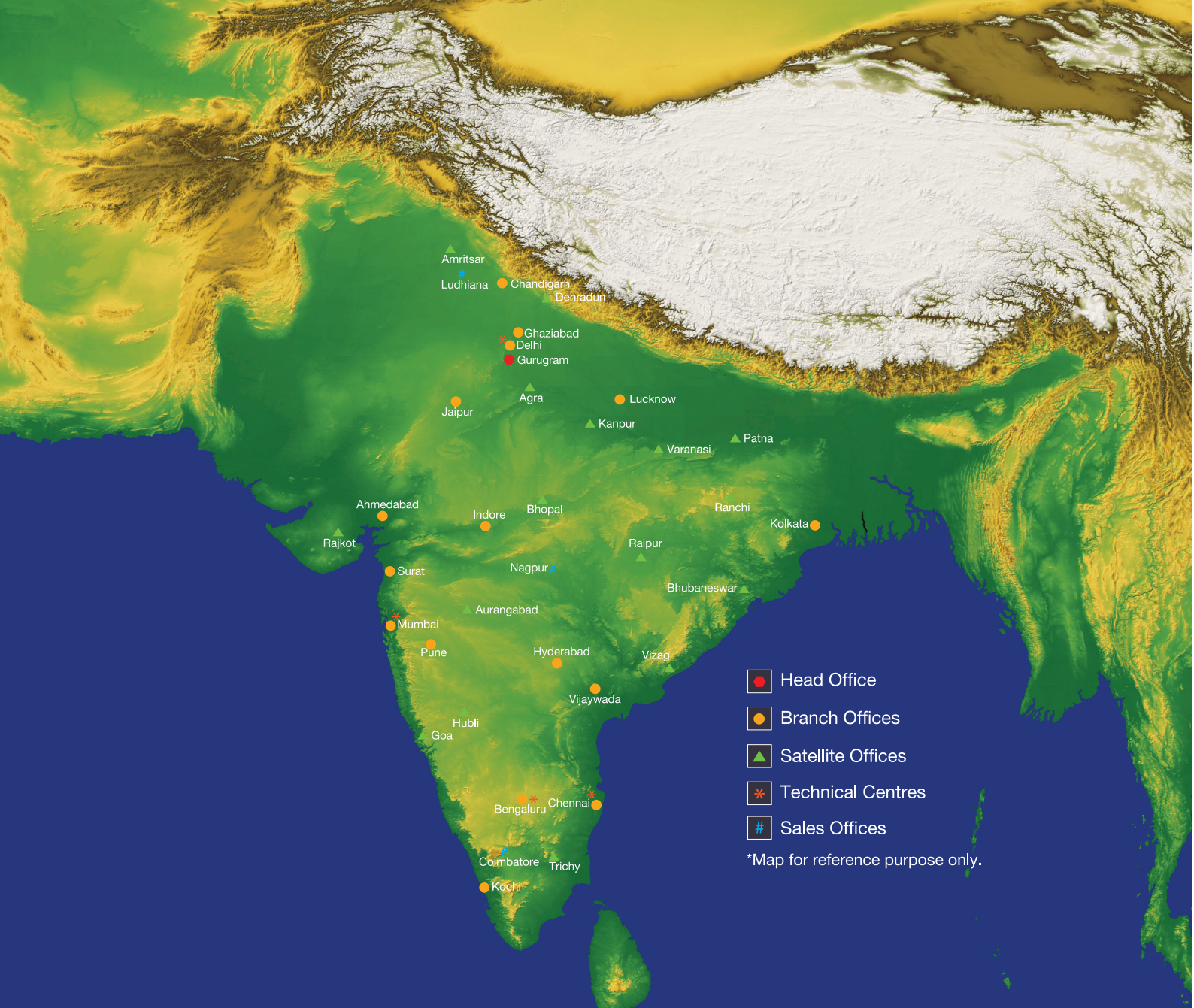
\*Images shown are for representation. Actual may vary.



TECHNICAL SPECIFICATION					
TYPE		COOLING ONLY-INVERTER			
Model Name			RAY-AE13VG	RAY-AE18VG	RAY-AE22VG
		Unit	RBY-AE13VG	RBY-AE18VG	RBY-AE22VG
Performance	Cooling Capacity (Rated)*	W	3500	5150	6250
		TR	1.0	1.5	1.8
	Rated Power Input	W	1060	1570	2050
	Rated Current	A	4.9	7.2	9.4
	ISEER		3.86	3.98	3.74
	BEE Star Ratings		3	3	3
Electrical Data	Voltage	V	230V	230V	230V
Evaporator	Fin Colour		Blue	Blue	Blue
Indoor Air Flow	(Turbo/Hi/Mi/Lo)	CMH	790/620/581/545	1050/920/830/790	1150/1050/850/790
Indoor Noise(Low/Mid/Hi/Turbo Speed)		dBa	43/44/47/48	44/45/48/49	46/47/49/51
IDU Temperature Display			Yes	Yes	Yes
IDU Dimension	Net Dim(W * D * H)	mm	800 x 230 x 295	1000 x 230 x 295	1000 x 230 x 295
	Packing Dim(W * D * H)	mm	885 x 297 x 362	1085 x 297 x 362	1085 x 297 x 362
	Net / Gross Weight	Kg	9.3/11.0	11.0/14.0	11.0/14.0
Condenser	Fin Colour		Blue	Blue	Blue
Outdoor Noise Level dB		dBa	60	60	60
ODU Dimension	Net Dim(W * D * H)	mm	781 x 241 x 557	781 x 281 x 555	781 x 281 x 555
	Packing Dim(W * D * H)	mm	925 x 360 x 605	925 x 400 x 605	925 x 400 x 605
	Net / Gross Weight	Kg	22/26	23.5/28.5	26/31
Refrigerant Type			R32	R32	R32
Connecting Pipe	Liquid and Gas Side Dia	Dia	9.52/6.35	12.7/6.35	12.7/6.3
	Maximum Length	m	15	15	20
	Maximum Elevation	m	10	10	15
Ambient Operating Range		°C	48	48	48

TECHNICAL SPECIFICATION					
TYPE		COOLING ONLY - NON INVERTER			
Model Name			RAM-AE13VG	RAM-AE18VG	RAM-AE22VG
		Unit	RBM-AE13VG	RBM-AE18VG	RBM-AE22VG
Performance	Cooling Capacity (Rated)*	W	3400	5100	6200
		TR	1.0	1.5	1.8
	Rated Power Input	W	944	1450	1758
	Rated Current	A	4.5	6.5	8.6
	ISEER		3.6	3.52	3.53
	BEE Star Ratings		3	3	3
Electrical Data	Voltage	V	230V	230V	230V
Evaporator	Fin Colour		Blue	Blue	Blue
Indoor Air Flow	Turbo	CMH	790/650/590/545	1080/950/840/790	1100/1020/820/790
Indoor Noise(Low/Mid/Hi/Turbo Speed)		dBa	43/44/46/48	43/45/47/49	46/47/49/51
IDU Remote LCD with Backlight			Yes	Yes	Yes
IDU Dimension	Net Dim(W * D * H)	mm	800 x 230 x 295	1000 x 230 x 295	1000 x 230 x 295
	Packing Dim(W * D * H)	mm	885 x 297 x 362	1085 x 297 x 362	1085 x 297 x 362
	Net / Gross Weight	Kg	9.3/11.0	11.0/14.0	11.0/14.0
Condenser	Fin Colour		Blue	Blue	Blue
Outdoor Noise Level dB		dBa	60	60	60
ODU Dimension	Net Dim(W * D * H)	mm	781 x 241 x 557	781 x 241 x 557	850 x 310 x 697
	Packing Dim(W * D * H)	mm	925 x 360 x 605	925 x 360 x 605	1032.5 x 440 x 755
	Net / Gross Weight	Kg	28.5/33.5	35/40	48/54
Refrigerant Type			R32	R32	R32
Connecting Pipe	Liquid and Gas Side Dia	Dia	12.7/6.35	12.7/6.35	15.88/6.35
	Maximum Length	m	15	15	20
	Maximum Elevation	m	10	10	15
Ambient Operating Range		°C	48	48	48

\*Rating conditions Cooling - Indoor: 27°C(80°F)DB, 19°C(66°F)WB, Outdoor: 35°C(95°F)DB



## MITSUBISHI ELECTRIC INDIA PVT. LTD.

**HEAD OFFICE:** 3rd Floor, Tower A, Global Gateway, MG Road, Gurugram – 122002 (Haryana)

**Tel. No.:** (Main): 0124-6739300/301 **Website:** [www.MitsubishiElectric.in](http://www.MitsubishiElectric.in) **Email:** [customersupport@asia.meap.com](mailto:customersupport@asia.meap.com)

**BRANCH/SALES OFFICES:** **Ahmedabad:** 079-67777888; **Bhubaneswar:** 09073949597; **Bengaluru:** 080-40201600;  
**Coimbatore:** 0422-4385606; **Chandigarh:** 0172-4601645; **Chennai:** 044-49232222; **Delhi:** 011-66057900;  
**Ghaziabad:** 011-66057900; **Hyderabad:** 040-43438888; **Indore:** 0731-4098991; **Jaipur:** 0141-4011109;  
**Kolkata:** 033-40858800/16-88; **Kochi:** 0484-4862093; **Lucknow:** 0522-4002607; **Ludhiana:** 0161-4061654;  
**Mumbai:** 022-66116200; **Nagpur:** 09921442323; **Pune:** 09922441773; **Rajkot:** 09586605009;  
**Surat:** 0261-4003111; **Vijaywada:** 08498894567.

**SATELLITE OFFICES:** **Agra:** 09536900140; **Amritsar:** 09780021037; **Aurangabad:** 09552572820;  
**Bhopal:** 08448398010; **Dehradun:** 08800878763; **Goa:** 09167113443; **Hubli:** 08448398010; **Kanpur:** 07755007767;  
**Patna:** 09073949596; **Raipur:** 08448397997; **Ranchi:** 0973949598; **Tirupati:** 09319591931; **Trichy:** 09205599022;  
**Varanasi:** 09336311110; **Vizag:** 09205987308

**Customer Care Toll Free No.: 1800 102 2626**

**TECHNICAL CENTRES:** **Ahmedabad:** 079-67777874; **Bengaluru:** 080-40201600; **Chennai:** 044-49232222;  
**Delhi:** 011-66057900; **Mumbai:** 022-66116200



"For E-waste Collection & Disposal process: Customer can get complete details of company process on collection, disposal of e-waste product (i.e. 'Mitsubishi Electric India' make Air Conditioner) and incentive / exchange scheme for returning of e-waste on Company website ([www.MitsubishiElectric.in](http://www.MitsubishiElectric.in)) or by calling on Toll free number 1800 102 2626.